


NOAA | Office of Response and Restoration 

# DIVER


Data Integration, Visualization, Exploration and Reporting  
*August 15, 2013*


*NOAA OR&R and NCCOS Discussion*

*Ben Shorr*

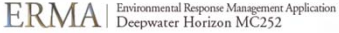
1/8/2014 1

DWH ATTORNEY WORK PRODUCT / ATTORNEY-CLIENT COMMUNICATION

NOAA | Office of Response and Restoration 



**DIVER**  
Data Integration Visualization Exploration and Reporting



**ERMA** | Environmental Response Management Application  
Deepwater Horizon MC252

FIELD SAMPLE DATA

LAB STATUS DATA

INSTRUMENT DATA

PHOTOLOGGER

LAB RESULTS

QUERY MANAGER

OBSERVATION DATA

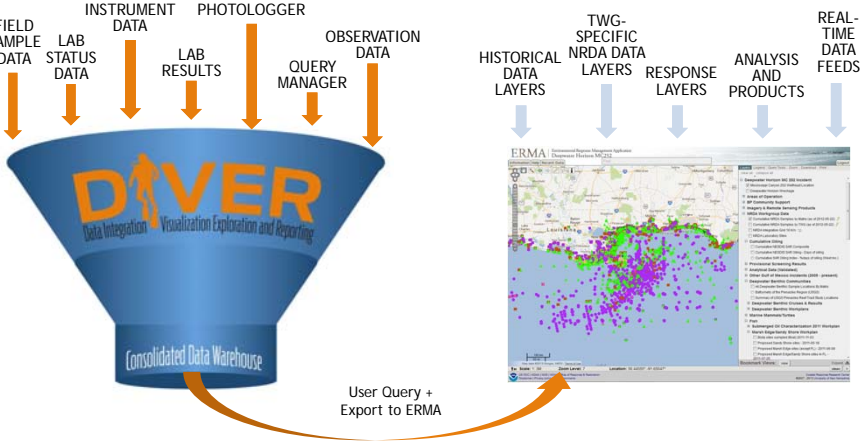
HISTORICAL DATA LAYERS

TWG-SPECIFIC NRDA DATA LAYERS

RESPONSE LAYERS

ANALYSIS AND PRODUCTS

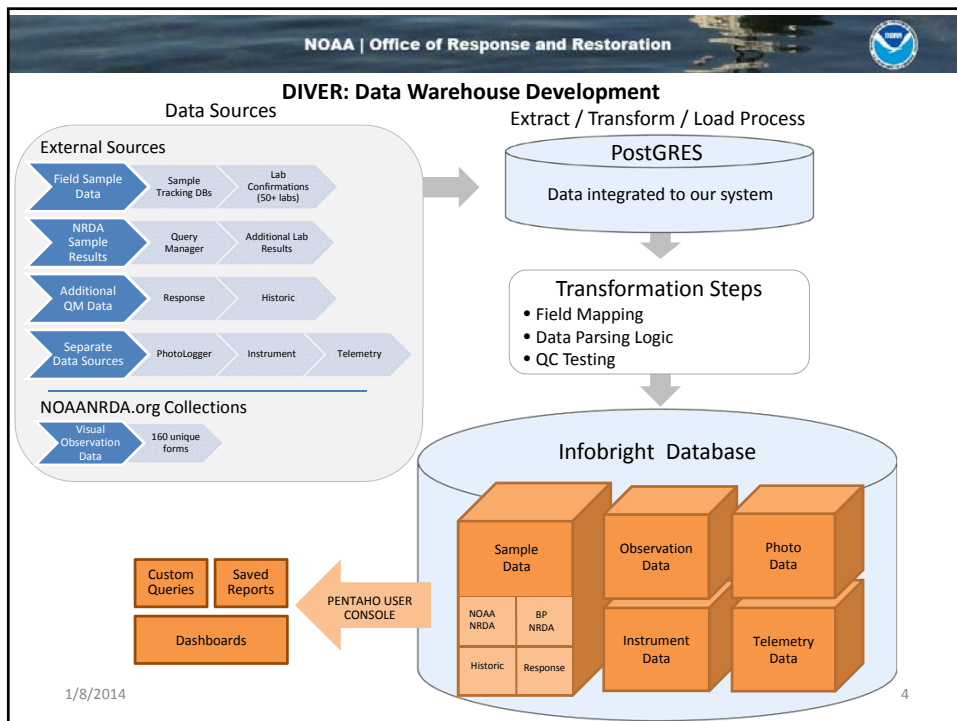
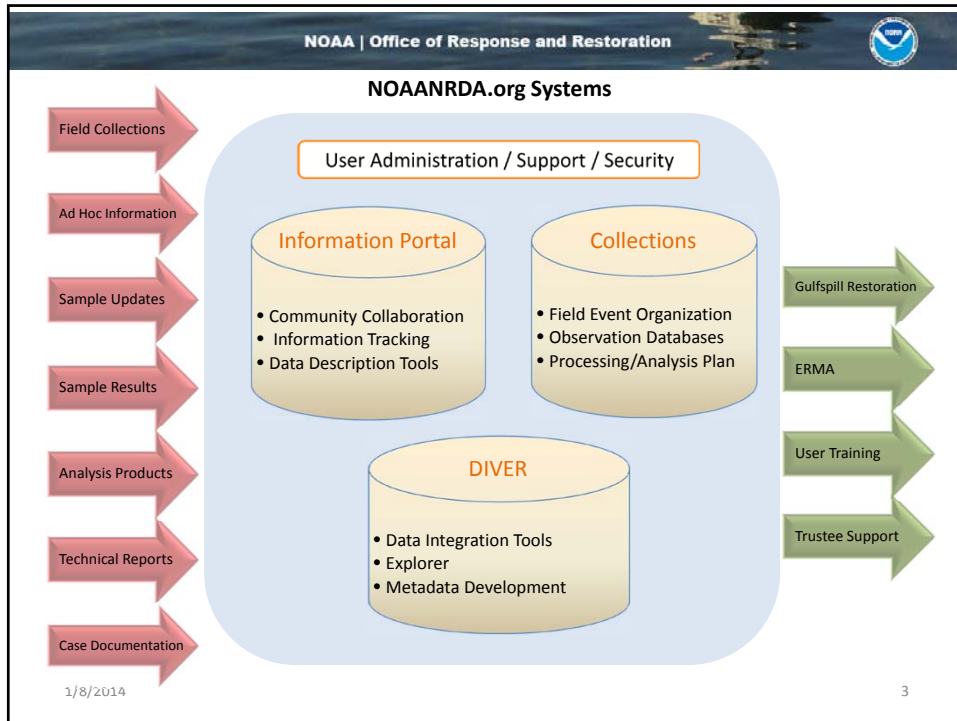
REAL-TIME DATA FEEDS

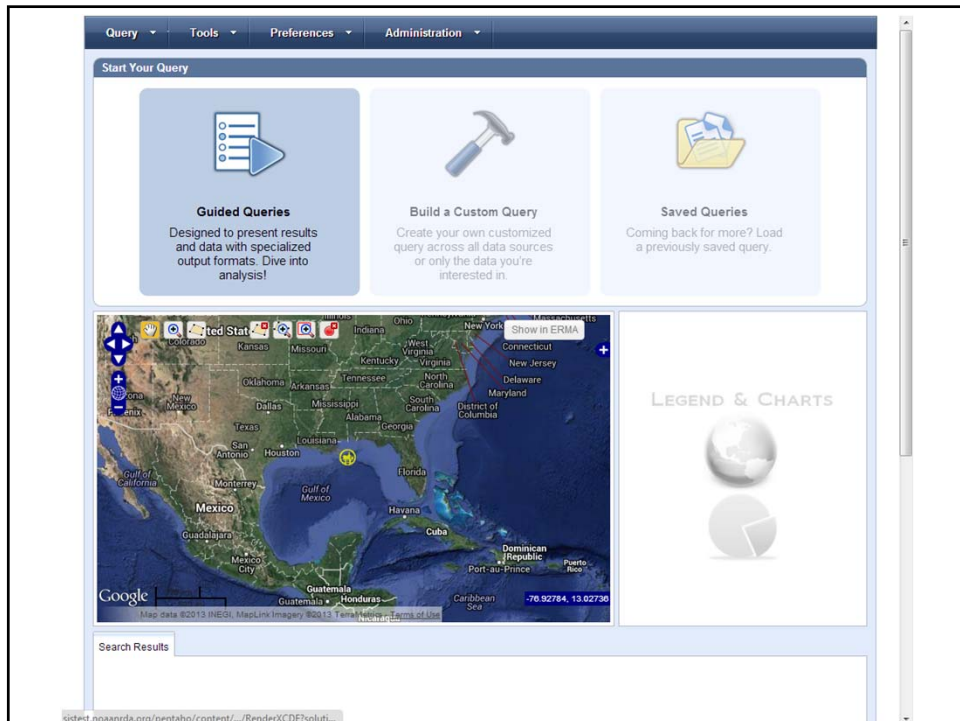
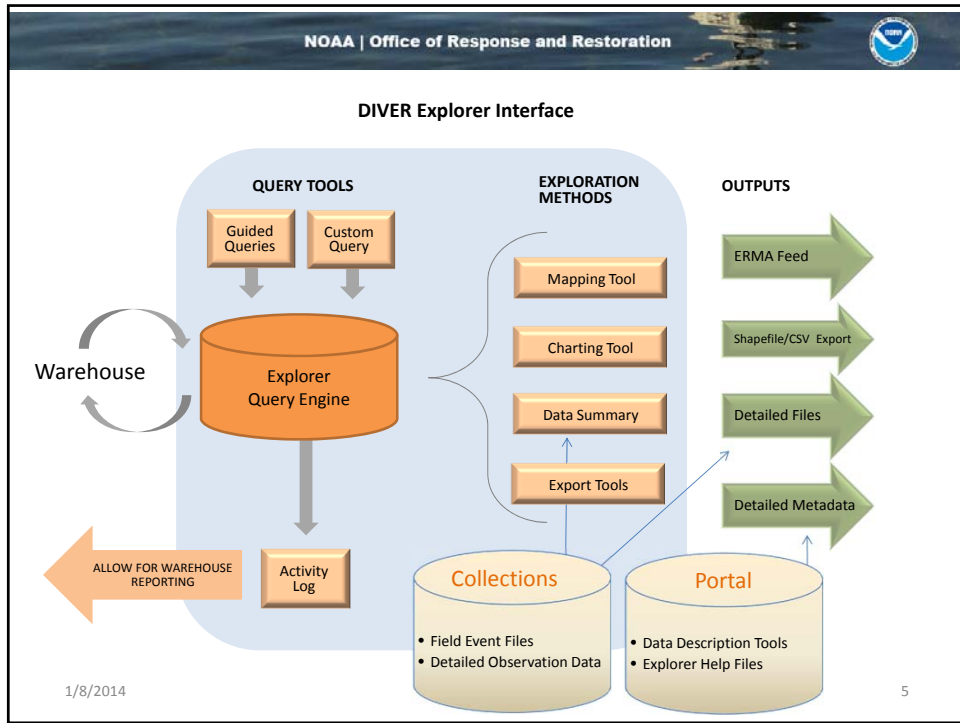


User Query + Export to ERMA

1/8/2014 2

DWH ATTORNEY WORK PRODUCT / ATTORNEY-CLIENT COMMUNICATION






Select a Guided Query

Expand All | Collapse All

- Data Status
- Field Observations and Instruments
- Photographs
- Contaminant Chemistry Results
  - Station Locations
  - Single Contaminant Results
  - Multiple Contaminant Results
  - Calculate Total PAHs
  - Export All Results
- Oil Source Analysis
- Results: Other Available Lab Data

**What are Guided Queries?**



**WHAT:** Guided Queries are **partially built** queries to help you access data and results. The map, symbology, and data table are tailored to each query.

**HOW:**  
Choose a Guided Query from the left to get started  
Select value(s) and add optional tab filters to refine your query

**TIP:**  
View Metadata to find field definitions, data details, and data caveats.  
For more information, see the [Guided Queries reference document](#).

Cancel Next

1/8/2014 Footer Text 7

Edit Query Filters

Guided Query: Contaminant Chemistry Results » Calculate Total PAHs » Sediment

Show Query Summary

Analysis Category | Analysis Type | Result Type | Depth Category | Source Type | Sharing Status | Analysis | New Filter

Field List: Search by field or source name

Values List: Enter text in the field to quickly find values

Selected Values (1): Click on a value to remove from the query

Field List	Values List	Selected Values (1)
Analysis [Samples]	PAH16 [Samples]	TOXPAH50 [Samples]
Analysis Category [Instruments, Photographs, Samples, Telemetry, Visual Observations]	PAH44 [Samples]	
Analysis Status [Instruments, Photographs, Samples, Telemetry, Visual Observations]	PAH45 [Samples]	
Analysis Type [Instruments, Photographs, Samples, Telemetry, Visual Observations]	PAH51 [Samples]	
Case/Activity [Instruments, Photographs, Samples, Telemetry, Visual Observations]	PAH52 [Samples]	
Client ID [Samples]	PAH_SUMW [Samples]	
Collection Form [Instruments, Photographs, Samples, Telemetry, Visual Observations]	TOTAL_PAH [Samples]	
	TOXPAH50 [Samples] <input checked="" type="checkbox"/>	

Back Optional Filters Cancel Run Query

1/8/2014 Footer Text 8

Query Tools Preferences Administration

**Query Name:** Contaminant Chemistry Results - Calculate Total      **Description:** Calculate the sum of PAH concentrations for sediment samples. This query provides options to handle analyte-specific concentrations below the method detection limit and then calculates the total for the selected list of PAHs.

**Owner:** Guided Query

**Last Modified:** 08/15/2013, 12:00 AM

**Query Filters**

Below-Detection-Limit Value Treatment = Treat as 0

Analysis Category = "Contaminant Chemistry"

Analysis Type = "Total PAH"

Result Type = "Calculation"

Depth Category = "Surface Sediment"

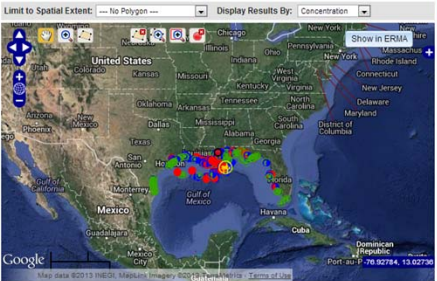
Source Type = "DWH Trustee NRDA"

Sharing Status = "Publicly Available"

Analysis = TOXPAH50

[Edit Query Filters](#)  
[Return to Start](#)

Limit to Spatial Extent:       Display Results By: Concentration



Legend    Charts    Symbology

Concentration: TOXPAH50 (PPB)

- Concentration < 121.969
- 121.969 ≤ Concentration < 642.557
- Concentration ≥ 642.557

**Search Results**

           Select File Type: Comma Delimited (.csv)   

\*Number of records returned from a query is based on multiple fields and may not match result, event, or sample counts.

Row #	Workgroup	Collection Study Name	QM Study ID	Station/Site
No filter applied				
1	Chemistry	Chem-Forensic Oil Sampling 03 2010	FF	Not Defined
2	Chemistry	Chem-Forensic Oil Sampling 03 2010	FF	Not Defined

1/8/2014
Footer Text
9