


# Office of Response and Restoration

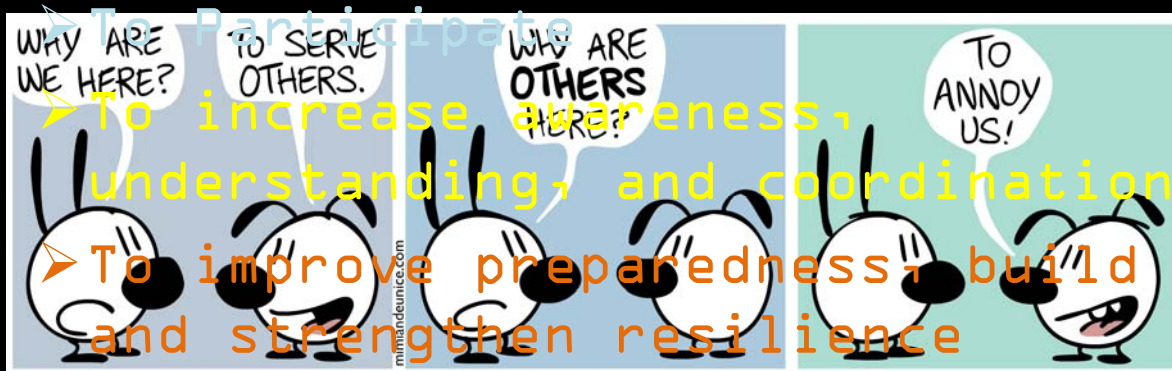
Emergency Response Division



NRPT- MS/AL  
JUNE 2016

Adam Davis  
NOAA Scientific Support Coordinator  
Tel: (251) 544-5012  
E-mail: adam.davis@noaa.gov

## Why are We Here



# Workshop Design Focus

- Enhancing our understanding of roles, responsibilities, authorities, needs, perspectives, and interests
- Identifying vulnerabilities, common themes/issues, and challenges
- Work to identify gaps, promote best practices, recommend further opportunities for collaboration, and design strategies for meeting the challenges.

## Overview

### Purpose/Objectives

**A** Quick discussion

### Review/Primer

**B** An overview of the overarching regulations and framework

### Assess

**C** Impacts, who, what, and where?

### Input

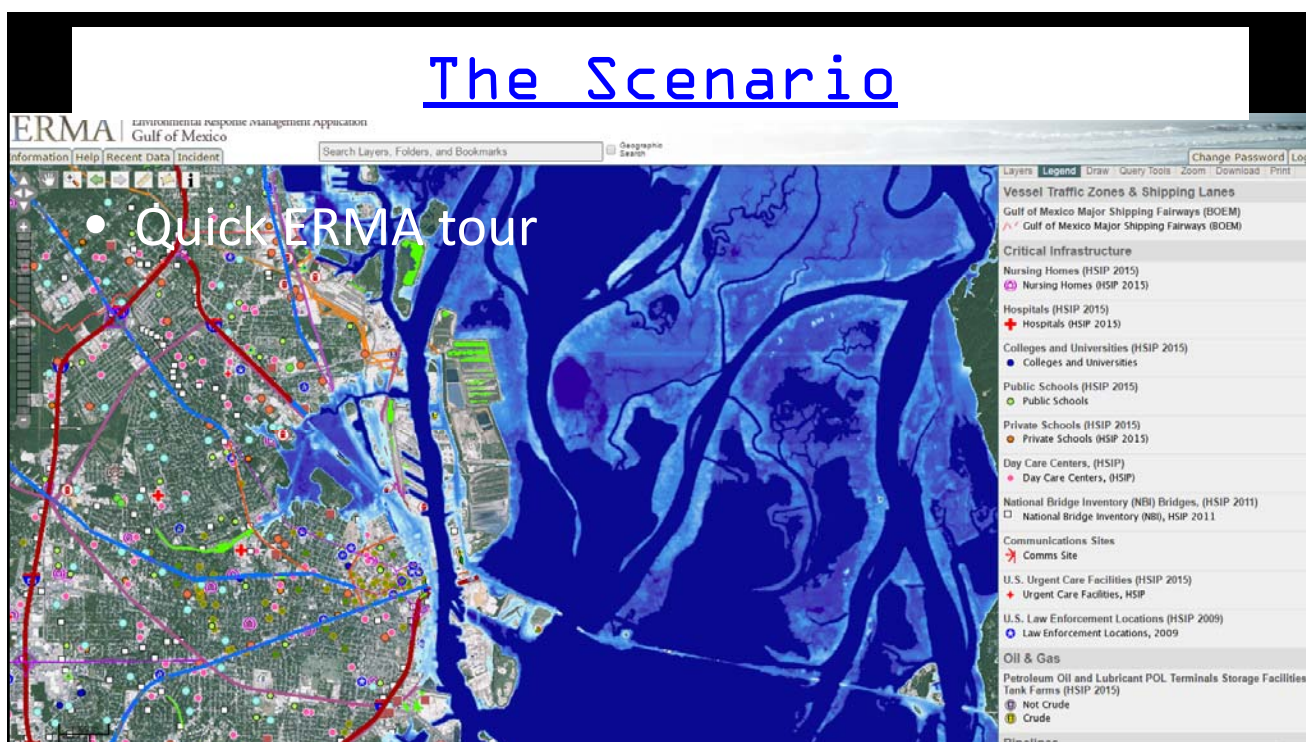
**D** Opportunity for all to be heard

### Coordination

**E** Working with others- best practices

### Collaboration

**F** What's next, How do we get better?



## Understanding the Threats/Risks/Vulnerabilities

Coastal Flood Exposure Mapper

### Select the Flood Hazards Map or One of the Community Exposure Maps

Select a section below to view maps showing flood hazards or different aspects of community exposure to those flood hazards.

First-time user? Starting with Flood Hazards is a good idea.



#### Flood Hazards

Flooding events are among the more frequent, costly, and deadly hazards that can impact coastal communities. There are two types:

- Short-term (episodic) – Temporary flooding caused by extreme conditions, including storm surge, tsunamis, inland flooding, and shallow coastal flooding.
- Long-term (chronic) – Flooding caused by a rise in relative sea level or some other change in conditions.



#### Societal Exposure

Understanding the populations that live in or near coastal flood-prone areas is an important information need, since residents who are elderly, who live in high-density areas, or who are impoverished may merit special considerations.



#### Infrastructure Exposure

Community infrastructure, including roads, bridges, and water and sewer systems, can be damaged by coastal flooding. Communities should first assess infrastructure vulnerabilities and associated environmental and economic issues to determine what steps are needed to protect these assets.



#### Ecosystem Exposure

Natural areas provide important benefits to coastal communities, including hazard protection, flood storage, water quality maintenance, fisheries support, and recreational opportunities. Communities can increase resilience by protecting natural areas along the coast that are exposed to flooding and adjacent inland areas.

