

Five Emergency Response Questions?

- What was spilled? (Oil Chemistry)
- Where is it going? (Oil Forecasts)
- What's at risk? (RAR/ESI)
- How will it hurt? (Potential Impacts)
- What can be done to mitigate the hurt?
(Alternative Response Technologies)

DO NO MORE HARM THAN GOOD

THIS IS ONLY A DRILL

NRPT Oil Spill Scenario – Garden Banks Mystery Spill

- Just before noon on 26 May, two BSEE employees in route to an offshore platform observe a slick 6 miles long by 0.5 miles wide that is greater than 60% dark oil coverage.
- The mystery spill was observed in the Garden Banks Lease Area. The source of the spill could not be determined by the observers. The leading edge was located at 27 degrees 45 minutes N Lat. 93 degrees 20 minutes W Long.
- Once the helicopter landed at the Shell Auger Platform, a National Response Center (NRC) notification was made. The BSEE employees also notified their HQ office in New Orleans and the USCG (note, the Shell Auger platform is not suspected – it was simply their destination).

2

THIS IS ONLY A DRILL
NRPT Oil Spill Scenario – Garden Banks Mystery Spill

- The observers estimated that the volume of oil was 1000 bbls (42,000 gal), but the true volume could be as much as 2000 bbls or even 500 bbls as on-water estimations are difficult to make and prone to error because of the difficulty in estimating true oil thickness.
- The NOAA Scientific Support Coordinator was notified and coordinated an initial trajectory analysis and spot weather forecast.
- Given the threat to the Flower Gardens, the waters of the Gulf of Mexico, and Texas Coastal Zone, the USCG FOSC has initiated a response.

3

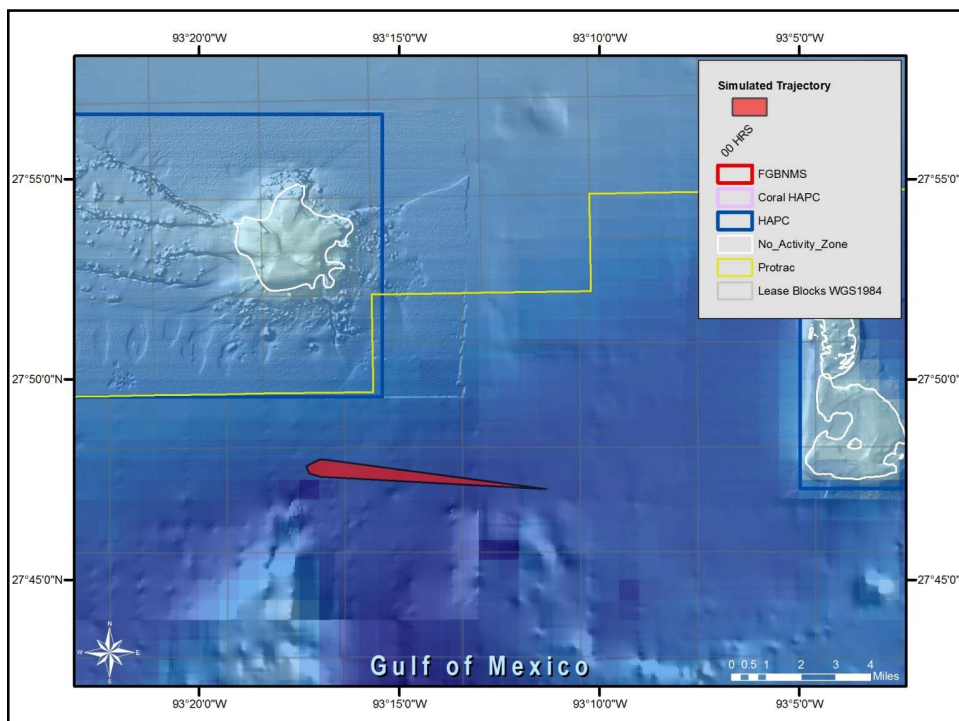
26 May 2016 - Noon

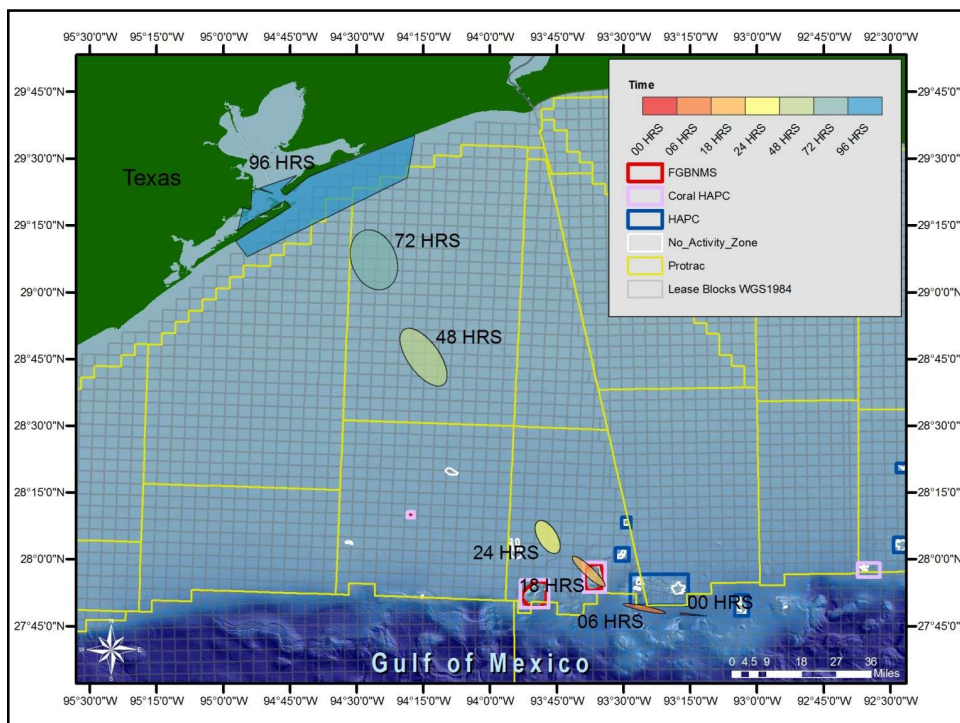
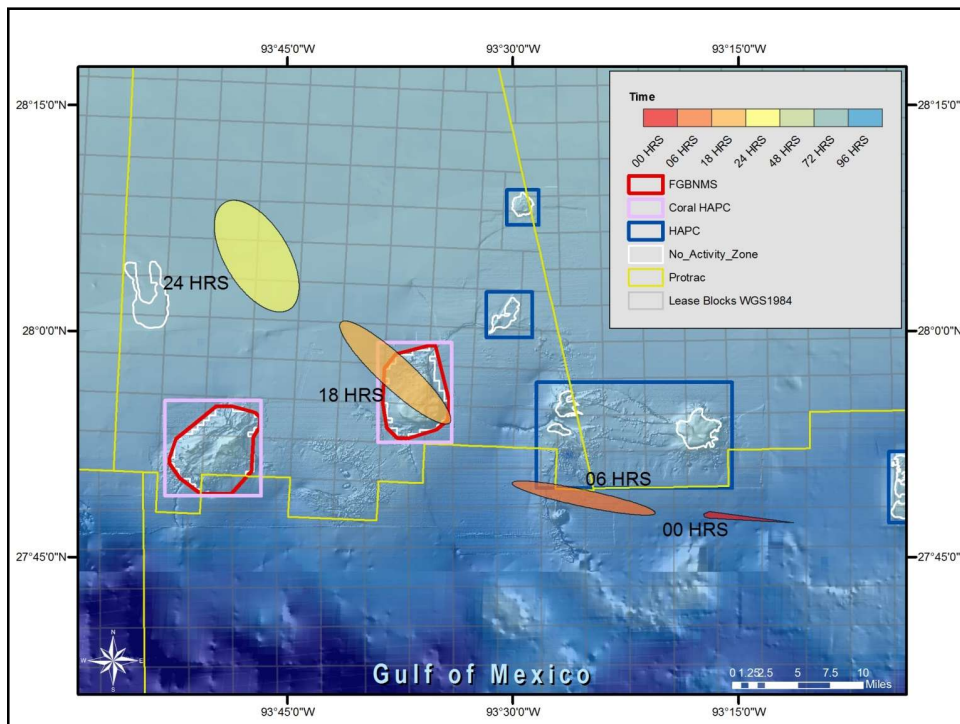


THIS IS ONLY A DRILL

- At Noon on 26 May 2016, the leading edge of the reported slick was located roughly 20 miles ESE of the East Flower Garden Bank of the Flower Garden Banks National Marine Sanctuary (FGBNMS).
- Winds are currently 10-15 knots out of the ESE and ocean currents along the shelf are running W at just under 0.5 knots. The slick is expected to pass over the East Bank of the FGBNMS overnight.
- The trajectory forecast predicts that the slick will develop a more NE track once it moves over the shelf and toward the Texas coast.
- Landfall of any remnants of the slick is possible on Memorial Day on beaches in the Bolivar - Galveston area and potentially even further to the south depending on the longshore current speed. Beach oiling will likely be sporadic tarballs and streamers of emulsified weathered oil.

5





THIS IS ONLY A DRILL
NRPT Oil Spill Scenario – WX

- Thursday, 26 May 2016
ESE at 10-15 knots, Seas 2-4 feet
- Friday, 27 May 2016
SE at 15-20 knots, Seas 3-5 feet
- Saturday, 28 May 2016
SE at 15-20 knots, Seas 4-6 feet
(frequent breaking waves and white caps)
- Sunday, 29 May 2016
SE at 20-25 knots, Seas 5-7 feet
- Monday, Memorial Day (Sunny)
SSE at 10-15 knots, Seas 3-5 feet

9

- What was spilled? (Oil Chemistry)
 - Unknown Crude Oil
 - Estimated API Gravity – 32 to 34
 - Estimated Evaporation – 30 to 35 % in the first 48 hrs.
 - Estimated Natural Dispersion – 10 to 15%

