



The Louisiana  
**Coastal  
Information  
Management  
System**

**Craig Conzelmann**  
U.S. Geological Survey  
conzelmannc@usgs.gov

**Ed Haywood**  
LA Coastal Protection and  
Restoration Authority  
edh@la.gov

for DWH Long Term Data Management Coordination Meeting – Mobile, AL



Standards | Metadata | **Mandate** | Share-ability | Interoperability



## What is CIMS?

Suite of data driven applications  
and tools used to manage,  
visualize, share and analyze  
coastal data.



Mandate: Internal La CPRA policy



Standards | Metadata | **Mandate** | Share-ability | Interoperability



# What kind of data can I find in CIMS?

## Tabular

- Hydrographic
  - Real-time
  - Discrete
- Vegetation
  - Emergent marsh
  - Forested swamp
- Soil
  - Accretion
  - Sediment elevation
  - Soil properties

## Spatial

- Project boundary
- Monitoring stations
- Infrastructure
- Master Plan projects, features, flood modeling
- Habitat analysis
- Modeling results
- Bathymetry
- Sediment core
- Deposit/Borrow

## Unstructured (binary library)

- Documents
- Photos
- Videos
- Non-Standard data files such as ADCP or LISST

NOTE: These are the publicly available data in CIMS.



Standards | Metadata | Mandate | Share-ability | Interoperability



# Standards

## Geophysical



## Ecological



## Metadata



CSDGM: Content Standard for Digital Geospatial Metadata



- 191\* Suite:

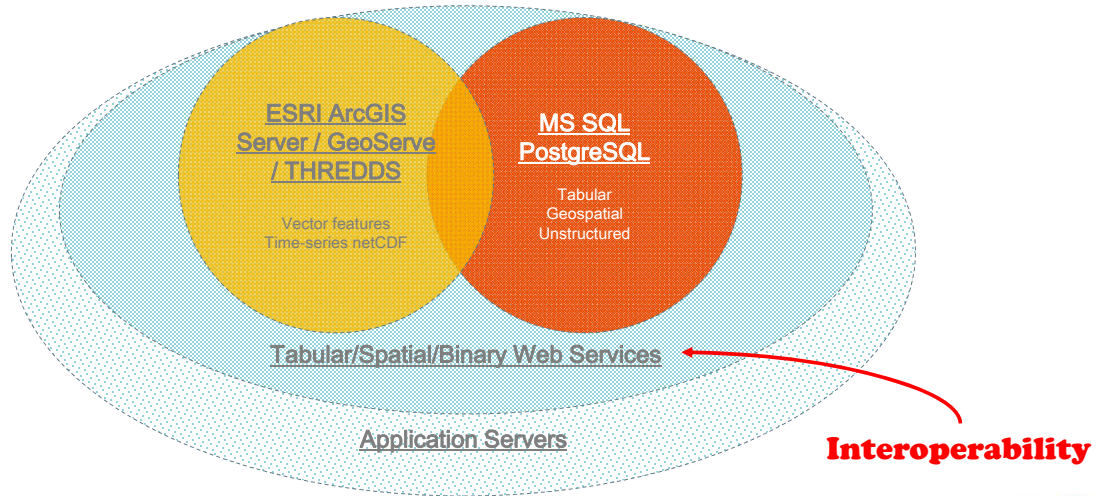
<https://cims.coastal.louisiana.gov/RecordDetail.aspx?Root=0&sid=12362>  
<https://cims.coastal.louisiana.gov/RecordDetail.aspx?Root=0&sid=11504>



Standards | Metadata | Mandate | Share-ability | Interoperability



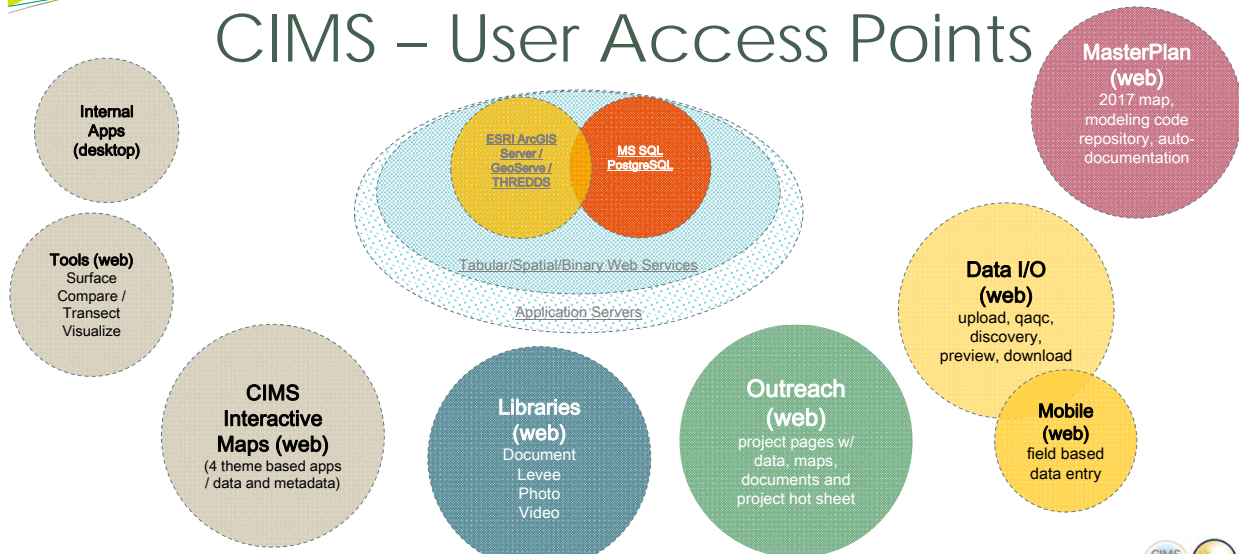
# CIMS – Behind the Scenes



Standards | Metadata | Mandate | Share-ability | Interoperability



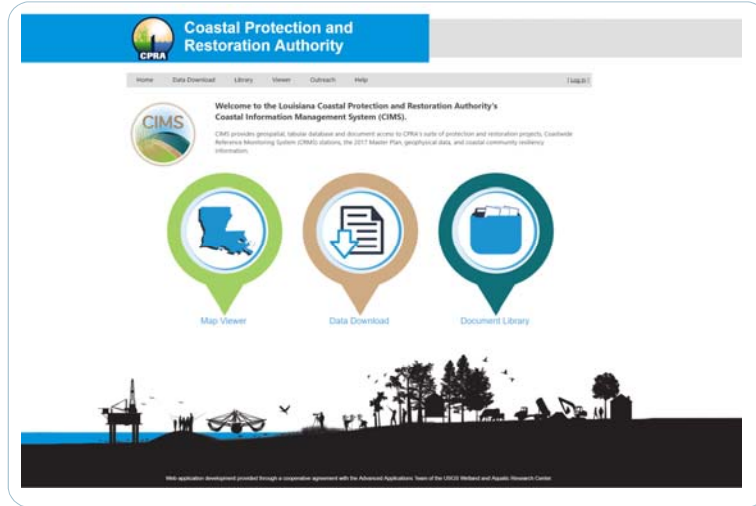
# CIMS – User Access Points



Standards | Metadata | Mandate | Share-ability | Interoperability



**CIMS  
Main  
Interface**



Easy access to the 3 main public modules:  
Maps, Data,  
Document Library

<https://cims.coastal.la.gov>

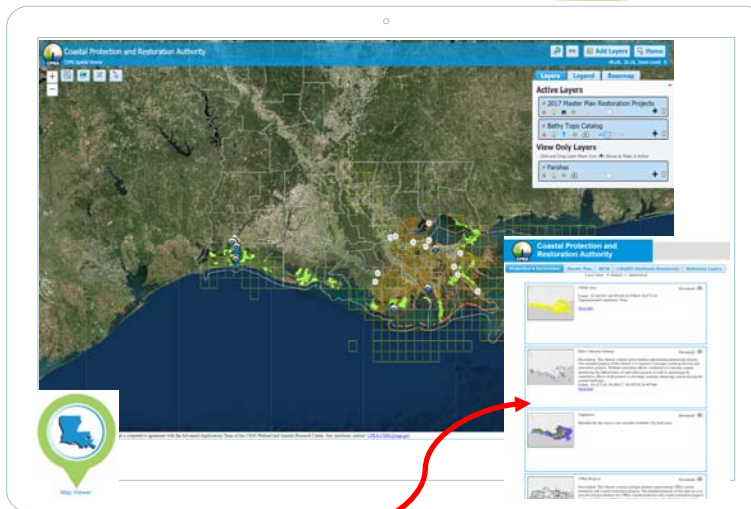


Standards | Metadata | Mandate | Share-ability | Interoperability



**CIMS  
Main  
Spatial**

Full featured viewer allowing user to layer, filter, extract and compare data.



Building on the same data services, customized maps are also supported.



*Outreach Focused*



*Master Plan Focused*

<https://cims.coastal.la.gov>



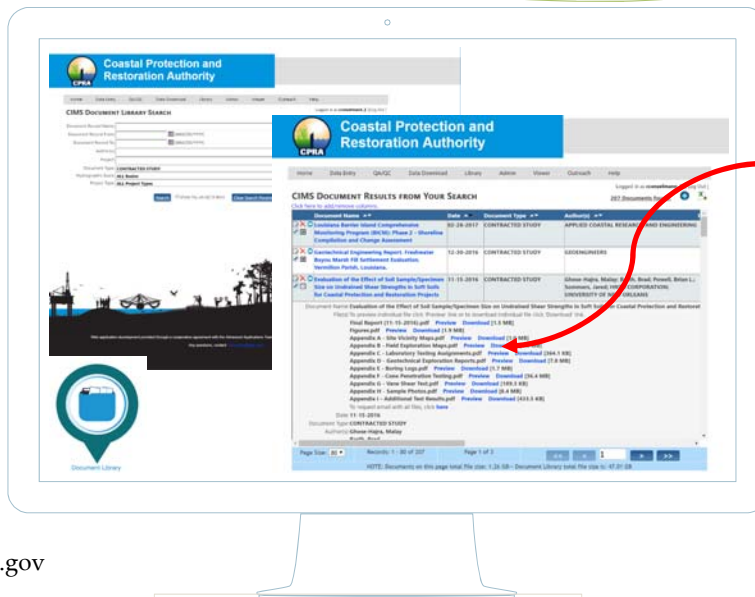
**Share-ability**

Standards | Metadata | Mandate | Share-ability | Interoperability



### CIMS Main Library

All documents tagged with projects, parish or hydro-basin enabling service level access to other CIMS modules



**Share-ability**

Building on the same database structures and data services, customized libraries are also supported.



Photographs

<https://cims.coastal.la.gov>

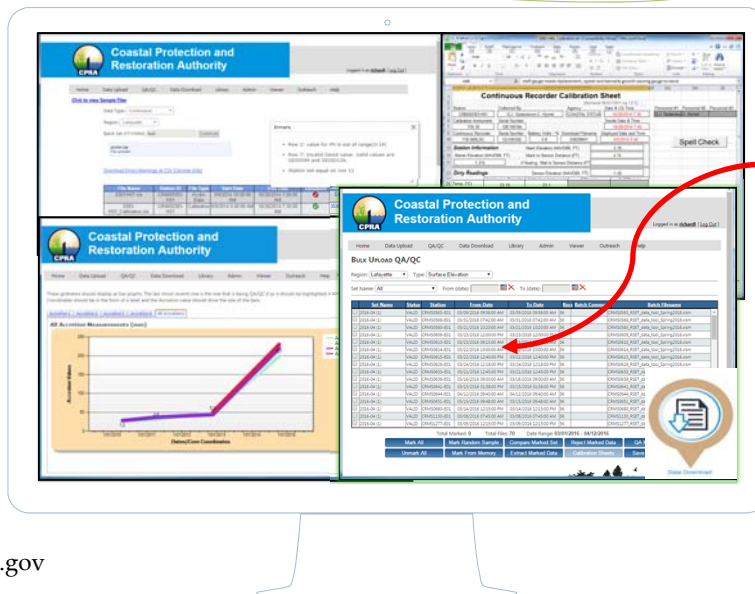


Standards | Metadata | Mandate | **Share-ability** | Interoperability



### CIMS Data – Load, QC, Review, Download

All CIMS data is rigorously reviewed BEFORE being made available for download or service enabled for other consumers.



**Share-ability**

<https://cims.coastal.la.gov>



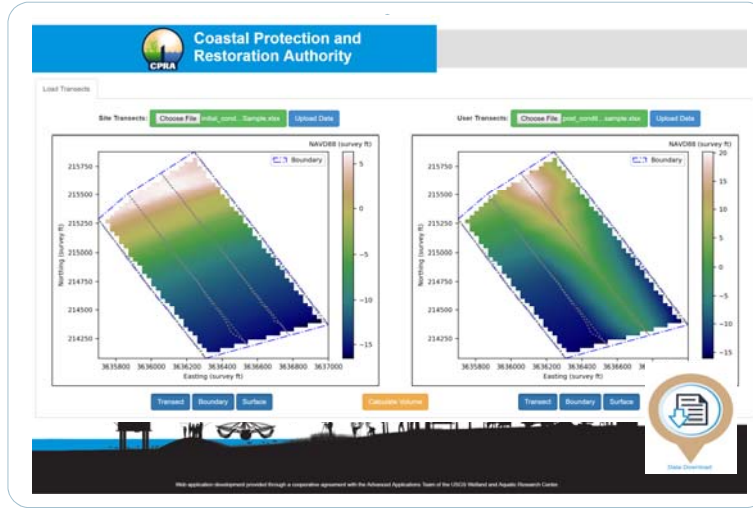
Standards | Metadata | Mandate | **Share-ability** | Interoperability





### CIMS Tools Surface and Volume Comparison

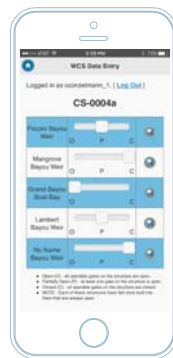
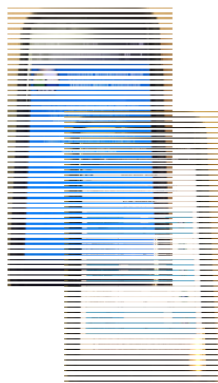
Planning and engineering tool allowing user to upload initial and desired elevation data, create surfaces then compare to get volume change information.



<https://cims.coastal.la.gov>



Standards | Metadata | Mandate | Share-ability | Interoperability



### Field Data Entry

Contractors perform data entry on SmartPhone  
....CIMS shows boat bay status to the public

<https://cims.coastal.la.gov>



Standards | Metadata | Mandate | Share-ability | Interoperability





Questions?

