



Overflight Maps

Jeff Lankford
Lexter Tapawan

National Oceanic and Atmospheric Administration
Office of response and Restoration
Emergency Response Division
Seattle, Washington

This Power Point offers a quick overview on the process of making an overflight map during an oil spill response. This doesn't provide a detailed description on how to create an overflight map – it merely shows how an overflight goes from the actual observation to a presentable and deliverable map product.

10/27/2015

From Overflight Observers

- Information Manager needs the following from the overflight observer(s):
 - **GPS Unit**
 - **Camera** (We will not go over the processing of photos since it doesn't pertain to the creation of overflight maps)
 - **Field Notes**

10/27/2015

MapSource

- **Garmin MapSource:**
 - This software is used to extract waypoints and track logs from the GPS unit.
 - Three files are exported: gdb, gpx, and txt.
 - The gpx file is the primary file used for the map creation, the other two files are a security blanket in case something goes wrong with the gpx file.

10/27/2015

MARPLOT

- MARPLOT is used as a platform for the gpx file, where some edits are made.
- The primary use is to convert the gpx file to a shapefile for ingestion into ArcMap.

MARPLOT is available through:

<http://www2.epa.gov/cameo/marplot-software>

**There is also the option to convert the gpx file to other formats such as kmz and xlsx.

10/27/2015

MARPLOT Continued...

- Ideally, the information manager would sit down with the overflight observer in order to get a briefing of the field notes.
 - The information manager goes through each waypoint with the overflight observer to generate notes corresponding to a particular waypoint/observation.

MARPLOT is available through:

<http://www2.epa.gov/cameo/marplot-software>

10/27/2015

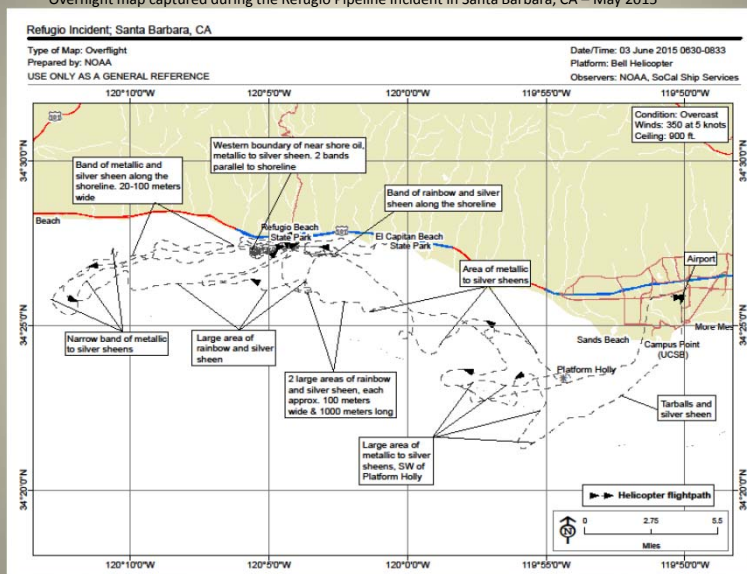
ArcMap

- Bring the shapefile into a template you have previously created.
- Notes are added as text boxes.
- Some tweaks are made such as date, time, weather observations and observers.
- The map is reviewed by the overflight observer.
- After the review, the map is exported into various formats and is then distributed.

10/27/2015

Visual example of a typical response overflight map

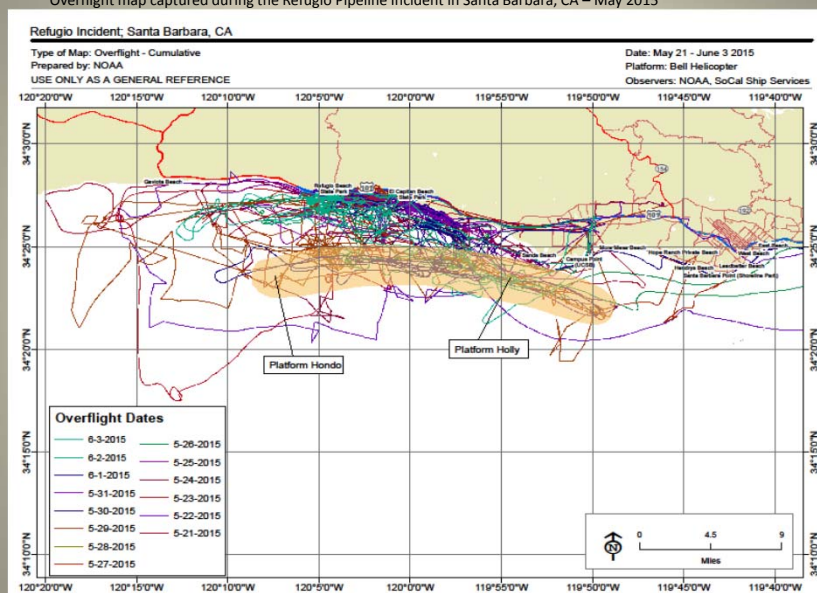
*Overflight map captured during the Refugio Pipeline Incident in Santa Barbara, CA – May 2015



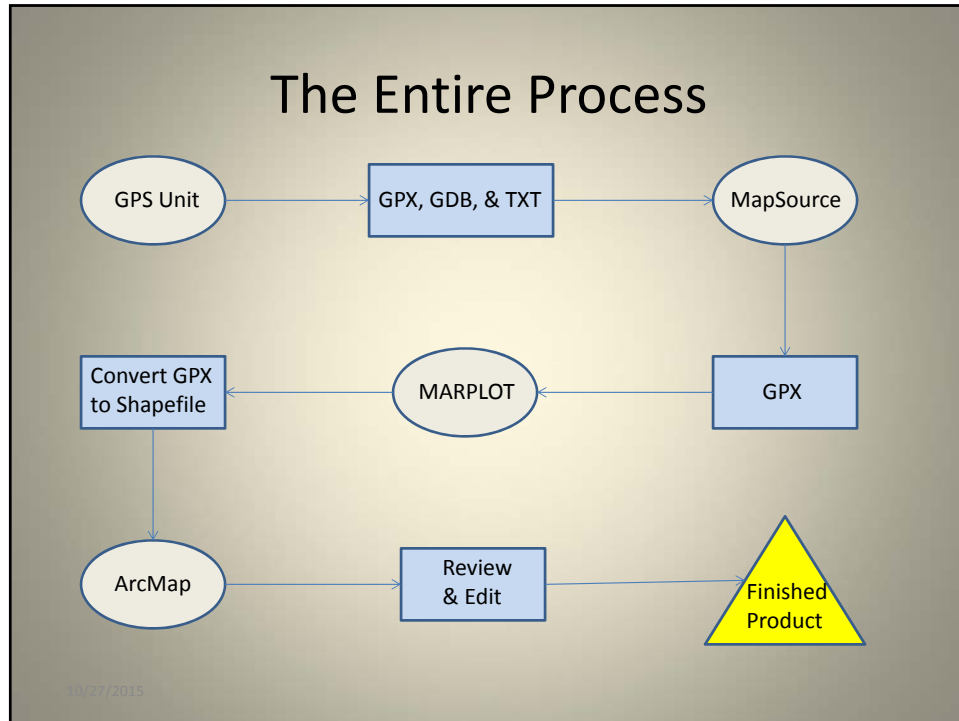
10/27/2015

Visual Example of a Compilation of Overflights

*Overflight map captured during the Refugio Pipeline Incident in Santa Barbara, CA – May 2015



10/27/2015



COMET Overflight Class

- https://www.meted.ucar.edu/training_module.php?id=1044#.ViFgwf7ruUk

10/27/2015