

NOAA | National Ocean Service
Office of **Response and Restoration**




Environmental Response Management Application (ERMA®) In a Nutshell

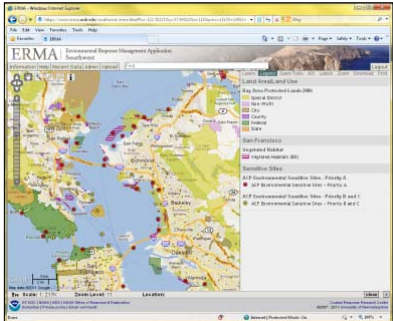
Kari Sheets
Spatial Data Branch
Office of Response & Restoration
NOAA's Ocean Service

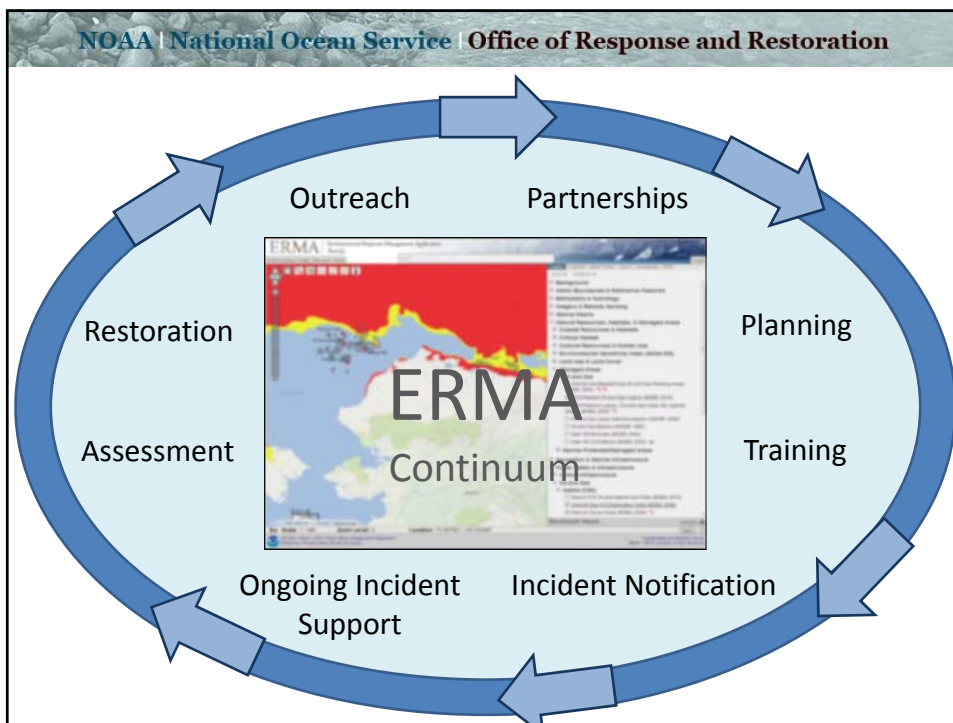
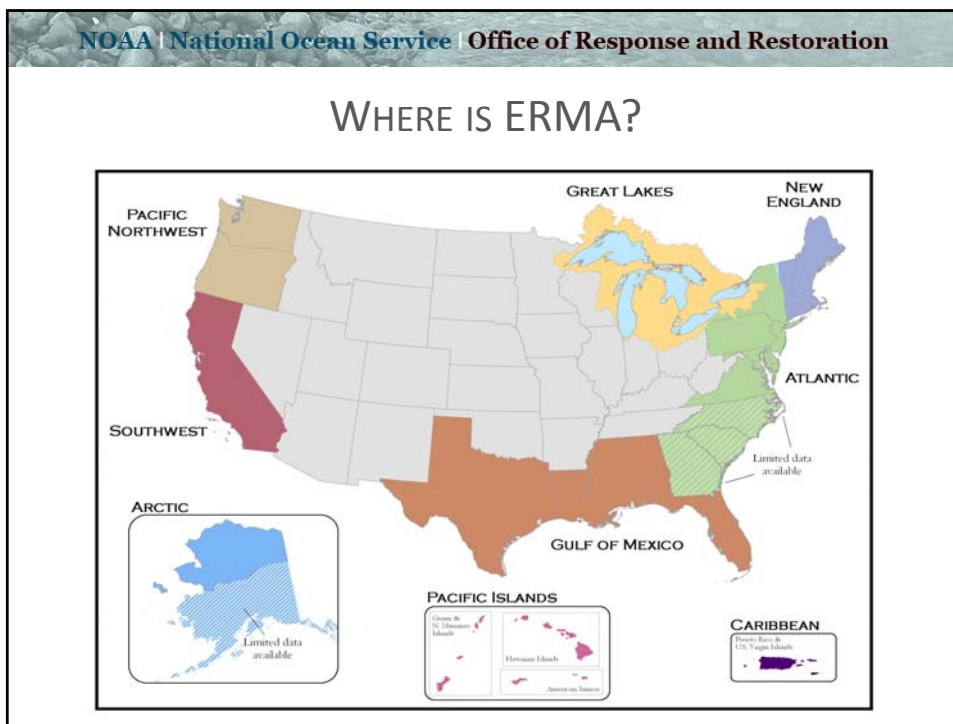


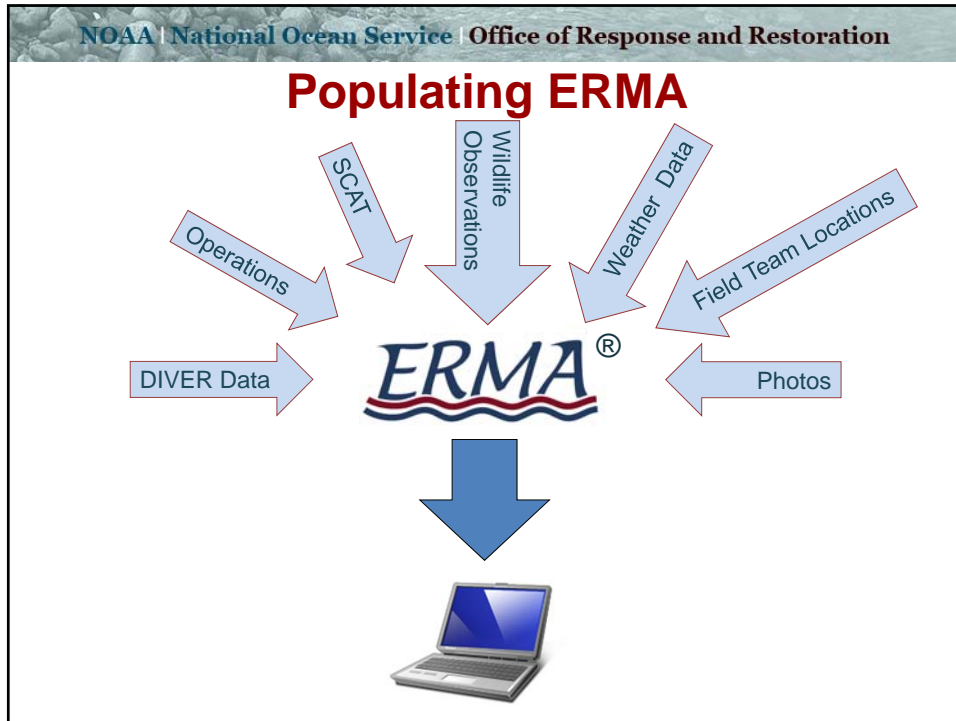
NOAA | National Ocean Service | Office of Response and Restoration

WHAT IS ERMA?

- Web-based mapping tool
- Provides centralized access to information
- Increases communication, coordination, and efficiency
- Prepare for, respond to, assess impacts from hazardous incidents or conditions
- Analyze and visualize environmental information relevant to all hazards







- NOAA | National Ocean Service | Office of Response and Restoration
- ## ERMA INTERACTIVE TOOLS
- **Zoom To**
 - Lat/Long
 - Place name or Address
 - Ship – MMSI Find
 - **Bookmark Views**
 - Saves layers and location
 - Customizable slideshow
 - **Areas of Interest (AOI)**
 - User-made map features
 - Draw function
 - **Measurement Tools**
 - Length/Area
 - **Animations**
 - Show key layers across time
 - **Lite/Full Metadata Access**
 - **Attachments**
 - .jpg, .png, .tiff
 - PDF, Excel, Word
 - .Zip
 - **Find tool**
 - Automated search of all layers
 - **Map Labels**
 - Customize with user-made feature labels
 - **Print Tools**
 - Timestamp
 - Various page sizes
 - **Interactive Query Tools**
 - Environmental Sensitivity Index
 - US Fish and Wildlife IPAC
 - Layer Query by Polygon

NOAA | National Ocean Service | Office of Response and Restoration

ERMA ACCOUNT ACCESS

- **Public Side**
 - All publically available data
- **Restricted Account Side for Planning & Response**
 - Username/password required
 - Verified by NOAA
 - Various levels of access
 - Active incidents
 - Sensitive datasets
 - NRDA
 - Drills
- **Data available only to appropriate users and use**

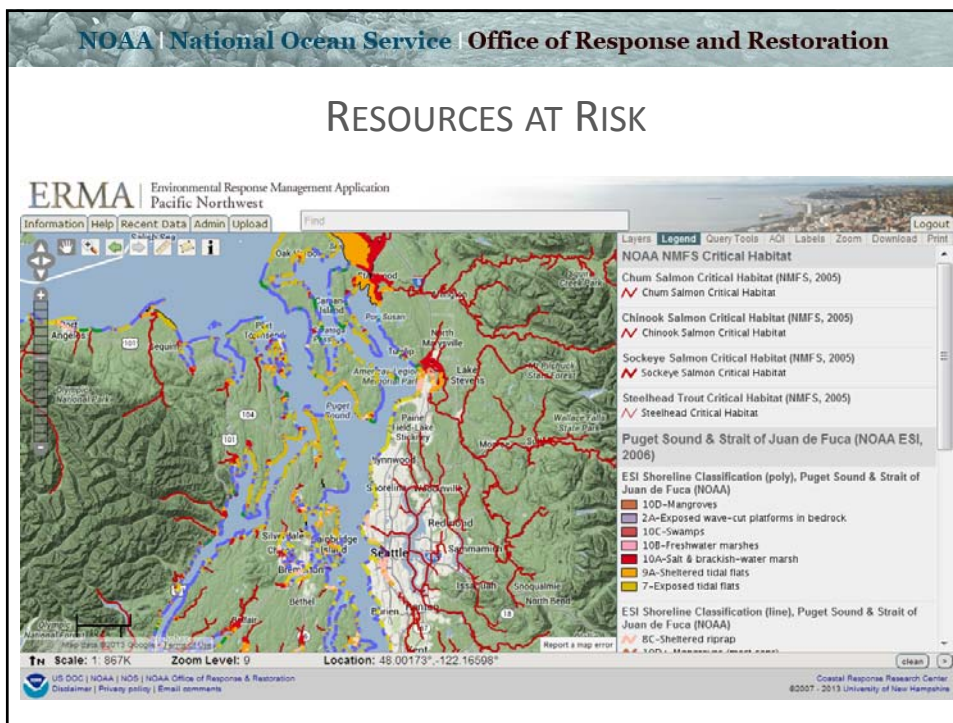
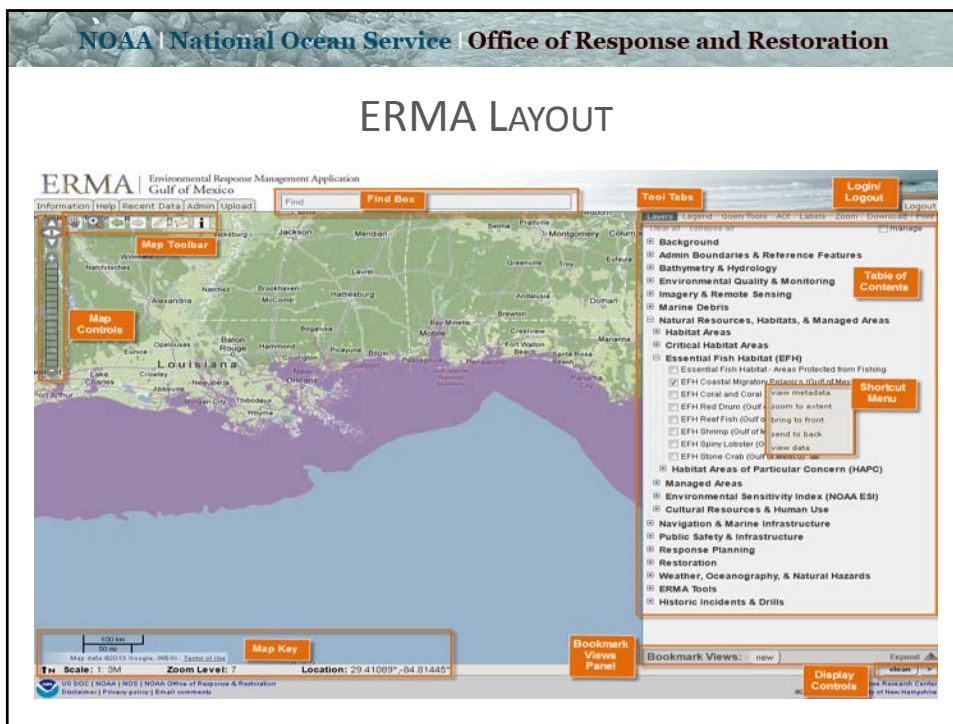


NOAA | National Ocean Service | Office of Response and Restoration

ERMA ACCOUNT SECURITY

- **User and Layer Security limits what any given user will see in ERMA**
- **Every layer in ERMA is assigned a sensitivity level**
- **Only users with the appropriate security level can see “protected” data**
- **User Sensitivity**
- **Layer Sensitivity**

User and Layer Sensitivity
 Federal
 NRDA
 Public
 Responder
 Sensitive Resources
 Trustee



NOAA | National Ocean Service | Office of Response and Restoration

SPATIAL BOOKMARKS

ERMA | Environmental Response Management Application
Gulf of Mexico

Information | Help | Recent Data | Admin | Upload | Find | Logout

Layers | Legend | Query Tools | AOI | Labels | Zoom | Download | Print
clear all collapse all manage

- Background
- Admin Boundaries & Reference Features
- Bathymetry & Hydrology
- Environmental Quality & Monitoring
- Imagery & Remote Sensing
- Marine Debris
- Natural Resources, Habitats, & Managed Areas
- Navigation & Marine Infrastructure
- Public Safety & Infrastructure

Bookmark Views: new Hide

- Shared Views
- Command Briefing
- Corpus Christi DRILL
- Command Briefing
- Environmental Unit
- Operations Section
 - 09-1802013 1600 Deployed Boom
 - 09-18-2013 0830 Deployed Boom
 - AIS Vessels, River Miles, & Nautical Chart
- PHINICS

Scale: 1: 54K Zoom Level: 13 Location: 27.84325°, -97.03511°

US DOC | NOAA | NOS | NOAA Office of Response & Restoration
Disclaimer | Privacy policy | Email comments

Coastal Response Research Center
©2007 - 2013 University of New Hampshire

NOAA | National Ocean Service | Office of Response and Restoration

QUESTIONS?

KARI SHEETS
KARI.SHEETS@NOAA.GOV