

Spills Advisory Group

Nancy E. Kinner
Coastal Response Research Center (CRRC)
Center for Spills and Environmental Hazards (CSE)
University of New Hampshire

April 11, 2018



Coastal Response Research Center
2014 SONS Executive Seminar

1
1

State-of-the-Science of DDO in Arctic Waters



Coastal Response Research Center

2

CRRC Website

The State of the Science for Dispersant Use in Arctic Waters

- Process Described
- Literature Databases
 - LUMCON prior to June 2008
 - CRRC after that
- Final Documents for Each Group



Coastal Response Research Center

3

Still to Come on Project

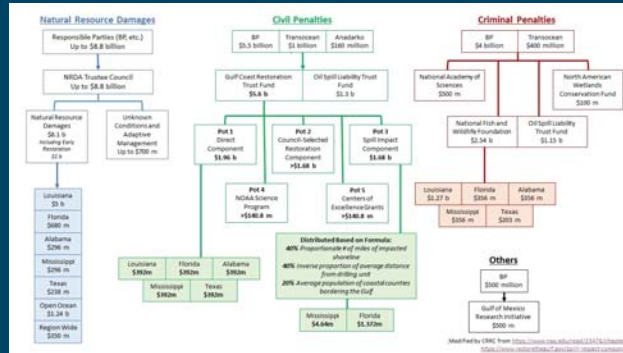
- Workshop - communicating the state of science to the public & others
 - Will follow completion of state of science papers
 - Small workshop with scientists and communication experts
 - Recommend types of material that would be most effective for communications to public



Coastal Response Research Center

4

DWH Long-Term Data Management Coordination



DWH Long-Term Data Management Coordination

- Workshop report on CRRC website
- Working groups
 - Data Standards
 - Interoperability
 - Data discovery/searchability
 - Dec 2018 workshop
 - Coordination with other DWH data management entities



Leveraging Science and Academic Engagement During Incidents



Coastal Response Research Center

7

Workshop Objectives

- Develop best practices for advancing NOAA OR&R interaction with academic community during response
 - Relationships built during the preparedness phase
- Build relationships and foster understanding of roles and responsibilities of the oil spill response/assessment scientific community and academic community, including an
 - Understanding of each other's strengths and limitations
- Develop mechanisms that facilitate access for academic research during oil spills.



Coastal Response Research Center

8

Submerged Oil



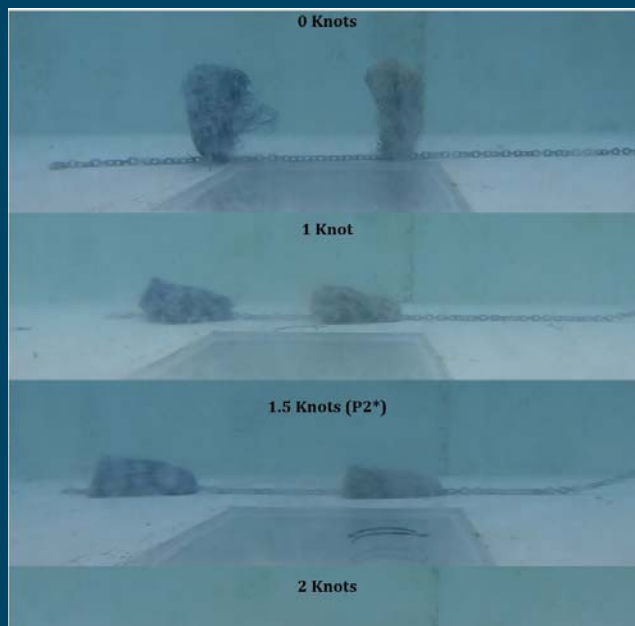
- Three oil types
- Weathered and fresh oils
- Different bottom substrates
- Different water velocities, salinities and temperatures



Coastal Response Research Center

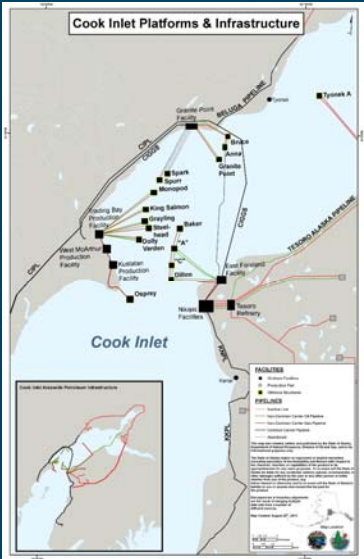
9

Snare Monitoring and Detection



Coastal Response Research Center

10



Cook Inlet Platforms & Infrastructure

- Center for Spills and Environmental Hazards
- Marine snow and oil marine snow interactions in Cook Inlet
- UNH and CI RCAC \$
 - Sue Saupe

Coastal Response Research Center

11

Thank You for Listening

Questions???

- nancy.kinner@unh.edu
 - 603-479-3777
- www.crrc.unh.edu

Coastal Response Research Center

12