

June 2, 2009 Sprague – Asphalt



Sprague Spill Overview

- June 2, 2009 / 1830 est. a discharge of PG 64-28 Asphalt occurred at Sprague Energy Terminal in South Portland
- Discharge size: approximately 20 bbls.
- Spill occurred approximately 1 hour into transfer with the T/V ASPHALT SEMINOLE
- Total potential: 40,000 bbls. Est.

A Picture



Another Picture



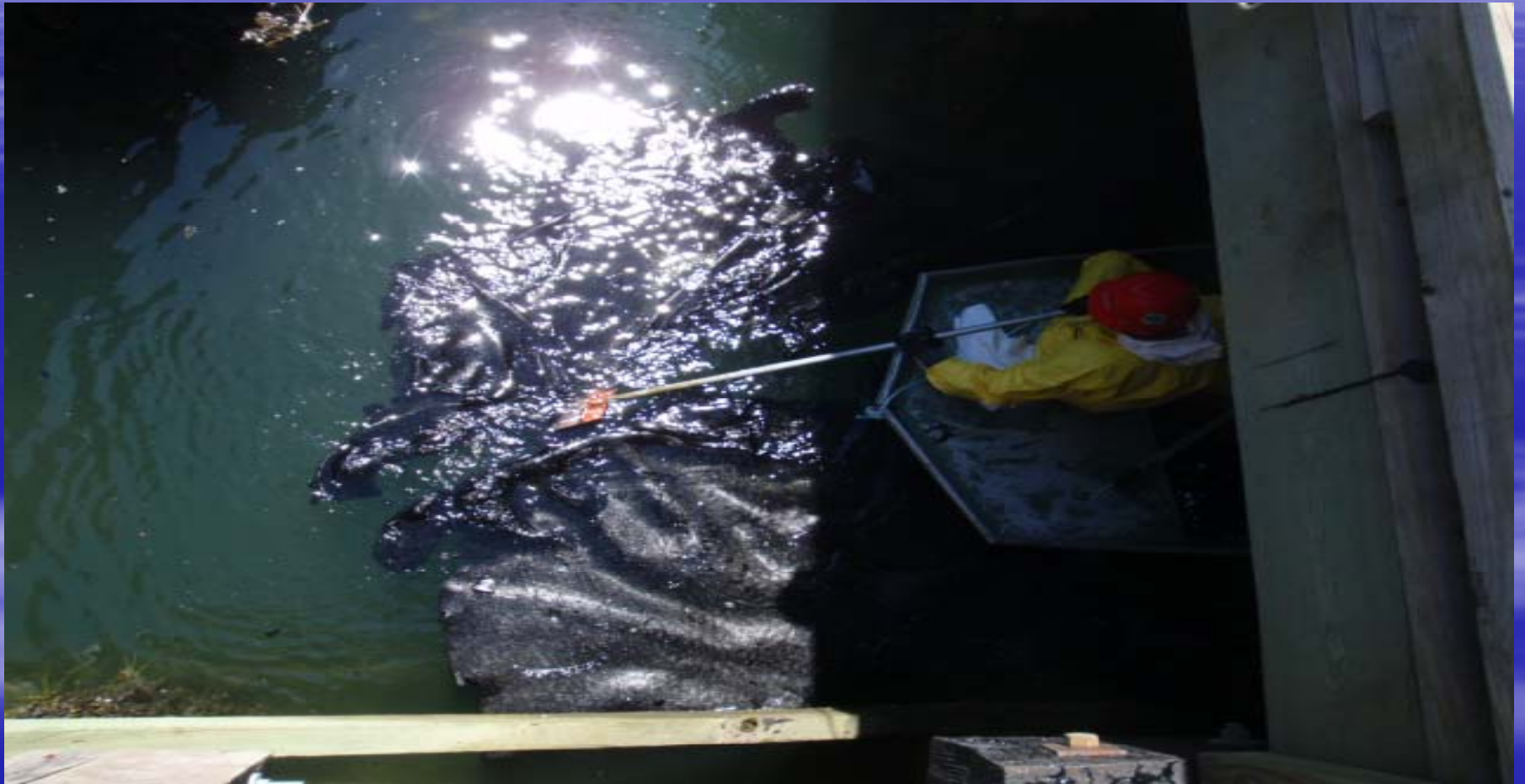
Notifications

- USCG received initial notification from Sprague POC at 1905 est.
- By 1930 Sprague Energy Terminal had made all their appropriate notifications – to include the NRC
- Clean Harbors was on-scene by 1900 to begin clean up operations – Sprague's OSRO
- USCG and ME DEP arrived on-scene by 2000 est. to begin their investigations

Clean Up Operations



Clean Up Operations



Clean Up Operations



Clean Up Operations

- Clean up operations began on the 2nd of June and went throughout a portion of the night.
- The asphalt stayed coagulated within the protective boom containment
- Clean Harbors was able to use hack saws and knives to cut the large patches of asphalt and manually remove it from the water

Manual Removal



Manual Removal



Manual Removal



Manual Removal



Manifold and Piping



Manifold and Piping



Source



Clean Up Operations

- Diver Down found no asphalt in the water column
- The clean up was concluded on the 4th of June at approximately 0730
- Once Sprague repaired the ruptured piping they continued on with the transfer which was completed shortly after the clean up.

Marching On



Power Point Presentation brought to
you by the...and Sector NNE

