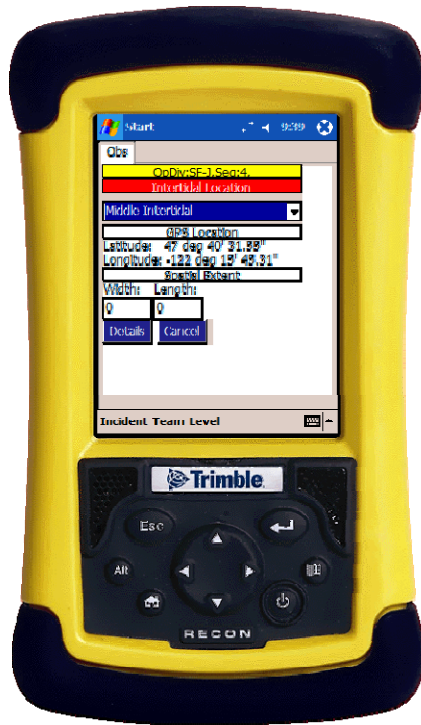
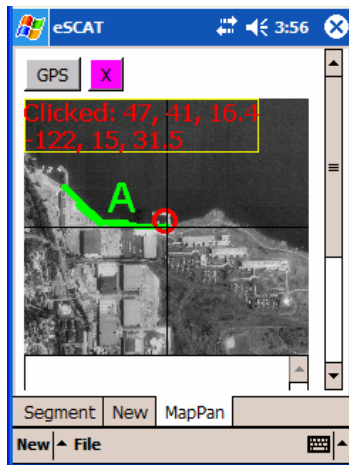




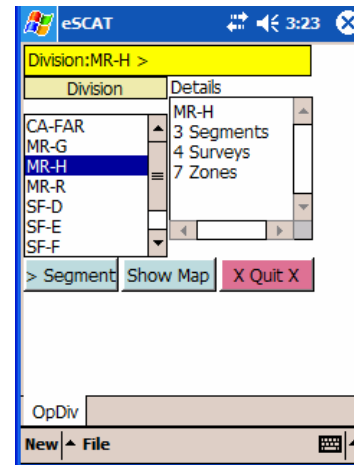
# A Tour of the Electronic SCAT Tool (eSCAT)



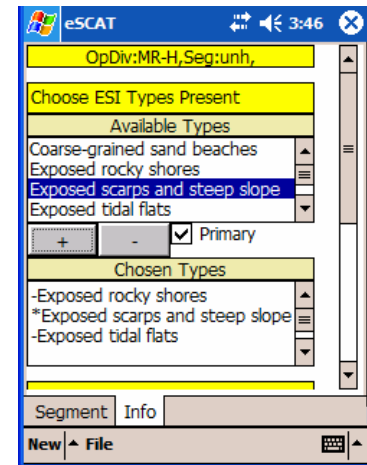
A Handheld PDA Application



with Mapping and GPS Support



Structured Data Collection and Database Integration



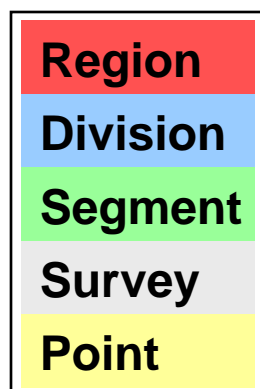
and Point and Click Usability

# Presentation Outline

- Presentation style
- Example of presentation style concept
- Interface Model
- Touring the Interface
  - Division, Segment, Map, Survey, Zone, Visual Help

# eSCAT: Presentation Scheme

NOAA's National Ocean Service / Office of Response & Restoration

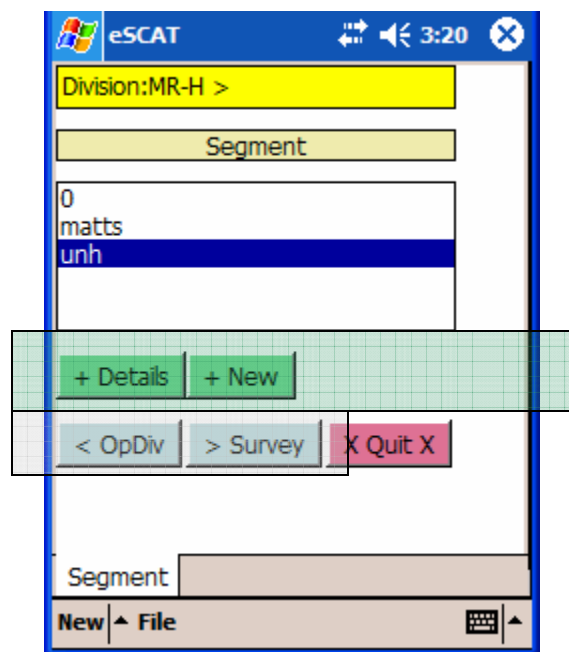


Legend shows position in data structure

# eSCAT: Presentation Scheme

NOAA's National Ocean Service / Office of Response & Restoration

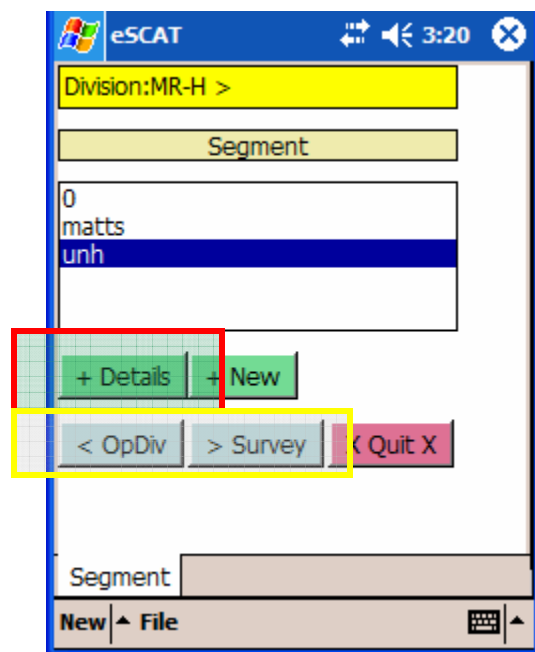
OR&R



- Transparent boxes highlight and/or group related widgets (buttons, dropdowns, list boxes, text boxes, headers, etc.).
- Fill color indicates position in data structure.

# eSCAT: Presentation Scheme

NOAA's National Ocean Service / Office of Response & Restoration



- Red outline indicates navigation widget (i.e. button) which will lead to subsequent forms that will be highlighted in following slides.
- Gold outline indicates navigation widgets.

# eSCAT: Presentation Scheme

NOAA's National Ocean Service / Office of Response & Restoration

Region

Division

Segment

Survey

Point

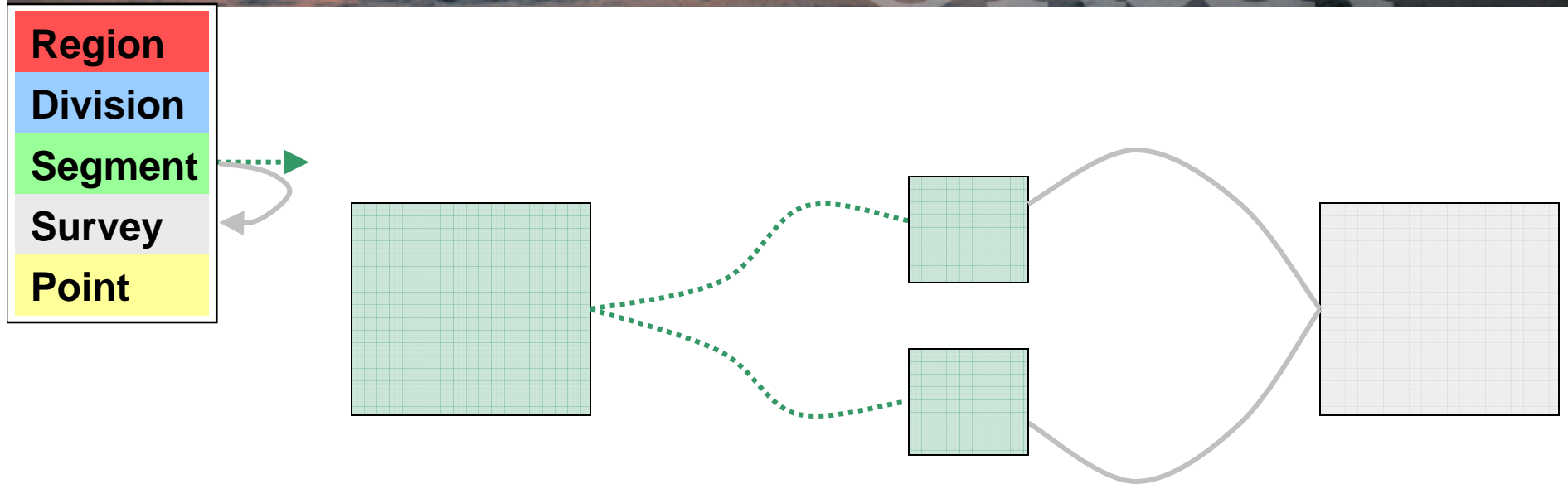
Connector lines indicate navigation within forms:



- Colors correspond to location in data structure.
- Dashed lines indicate navigation within data level.
- Solid lines indicate navigation between data levels.

# eSCAT: Presentation Scheme

NOAA's National Ocean Service / Office of Response & Restoration



Navigation within Segment level forms or scrolling down within a form.

Navigation between Segment and Survey Forms

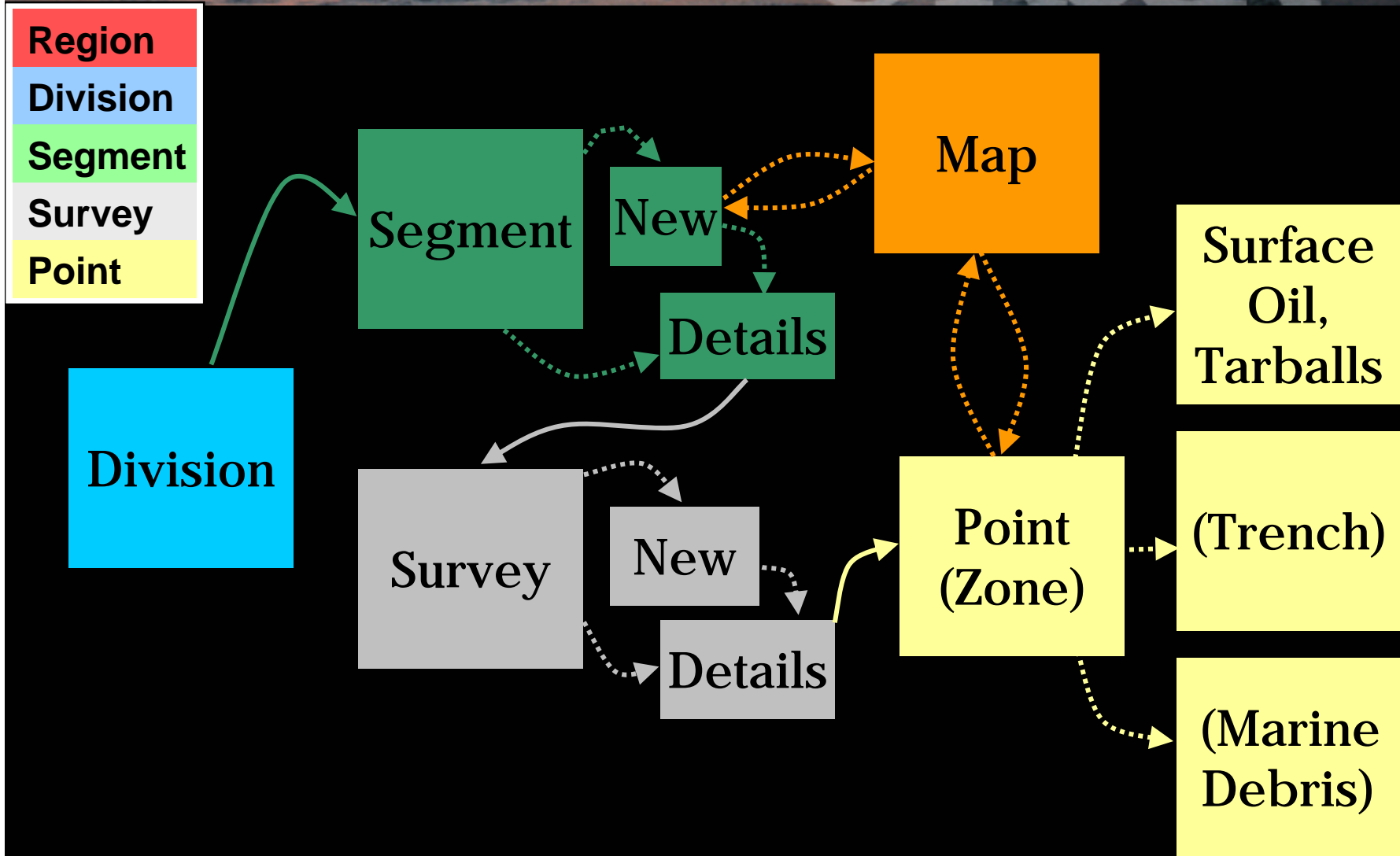
Segment level

Survey level



# eSCAT: Interface Model

NOAA's National Ocean Service / Office of Response & Restoration





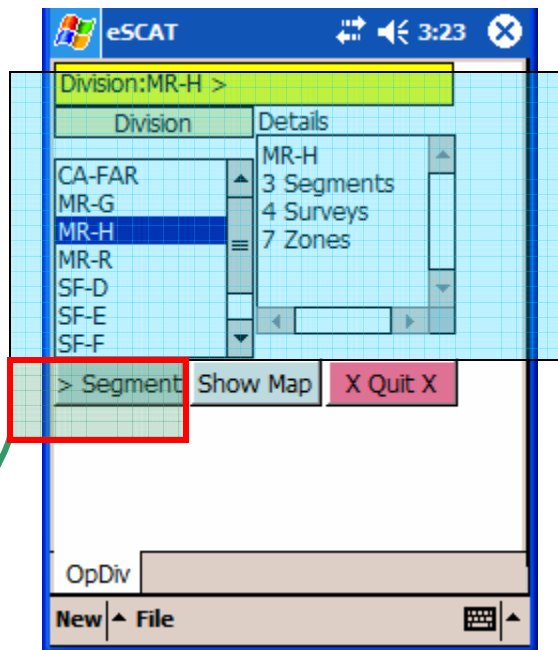
Putting it all together and beginning the  
actual eSCAT tour...

# eSCAT: Division, Segment Forms

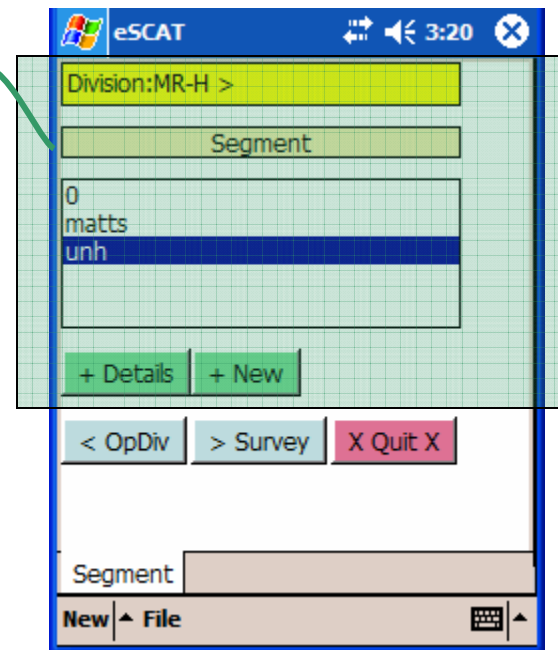
NOAA's National Ocean Service / Office of Response & Restoration

- Region
- Division
- Segment
- Survey
- Point

## Division



## Segment



Navigate between division and segment

# eSCAT: Segment Form

- Region
- Division
- Segment
- Survey
- Point

## Segment

Division:MR-H >

Segment

0  
matts  
unh

+ Details + New

< OpDiv > Survey X Quit X

Segment

New File

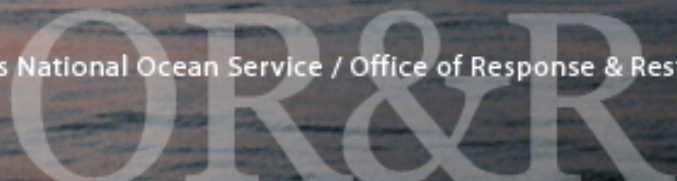
Add details

Add new segment

Proceed to survey form

# eSCAT: Add Segment Details Form

NOAA's National Ocean Service / Office of Response & Restoration



- Region
- Division
- Segment
- Survey
- Point

Add ESI details

OpDiv:MR-H,Seg:unh,

Choose ESI Types Present

Available Types

- Coarse-grained sand beaches
- Exposed rocky shores
- Exposed scarps and steep slope
- Exposed tidal flats

+ -  Primary

Chosen Types

- Exposed rocky shores
- \*Exposed scarps and steep slope
- Exposed tidal flats

Segment Info

New File

Add access, issue detail

Access, Issues

Backshore Access Adjacent Access

Road Previous

Staging Cultural

Backshore H

Ecological Socioeconomic

H L

> Save

Segment Info

N/A

New File

Scrolling down the form

# eSCAT: Add New Segment, Map Panel

NOAA's National Ocean Service / Office of Response & Restoration

Region  
Division  
Segment  
Survey  
Point



OpDiv:MR-H,Seg:,  
Segment Name  
crrc01  
Start Position  
47.687877256-122.2587  
End Position  
> Save - Cancel  
Segment New  
New File

Add name

Set segment end position using GPS or by clicking map

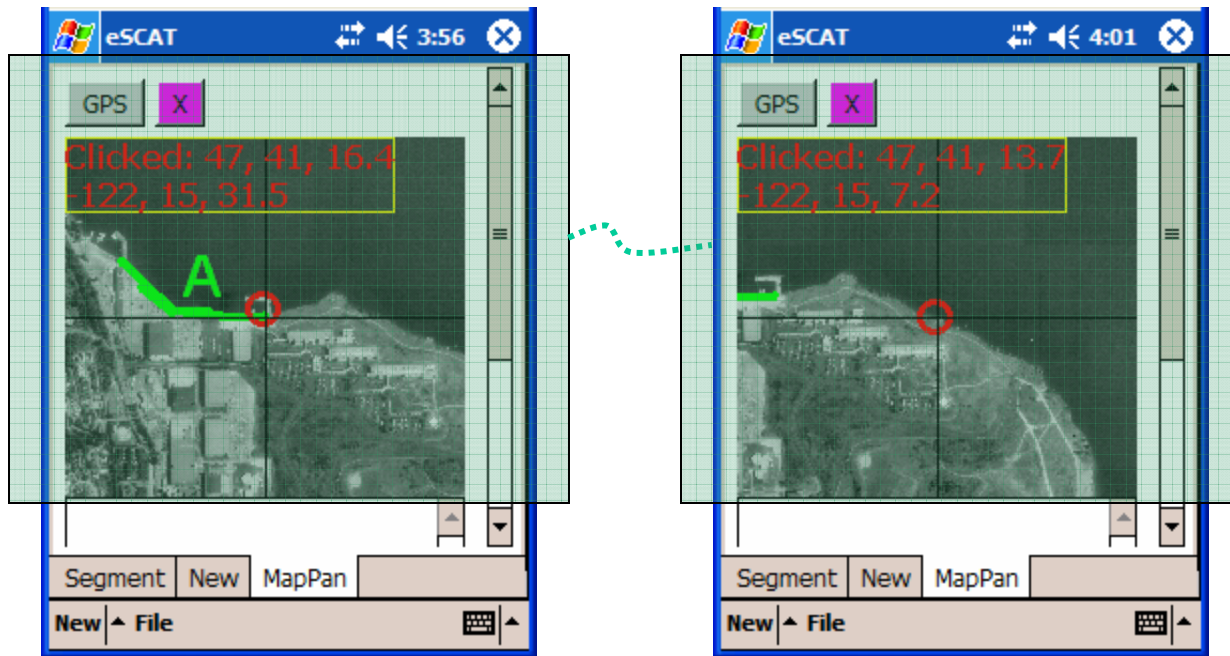
GPS X  
Clicked: 47, -11, 16.4  
-122, 15, 31.5  
Segment New MapPan  
New File



# eSCAT: Panning Map

- Region
- Division
- Segment
- Survey
- Point

Pan map by clicking on screen or by moving and updating position by clicking GPS button.



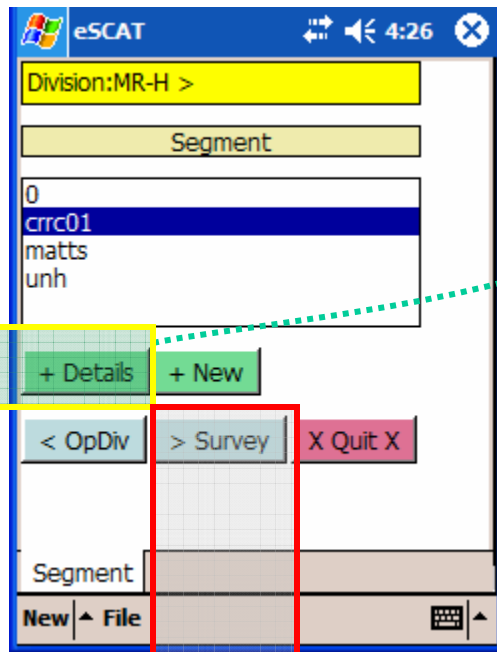
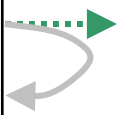
Segment start position and end position

# eSCAT: Segment, Add New Segment Forms

NOAA's National Ocean Service / Office of Response & Restoration



- Region
- Division
- Segment
- Survey
- Point



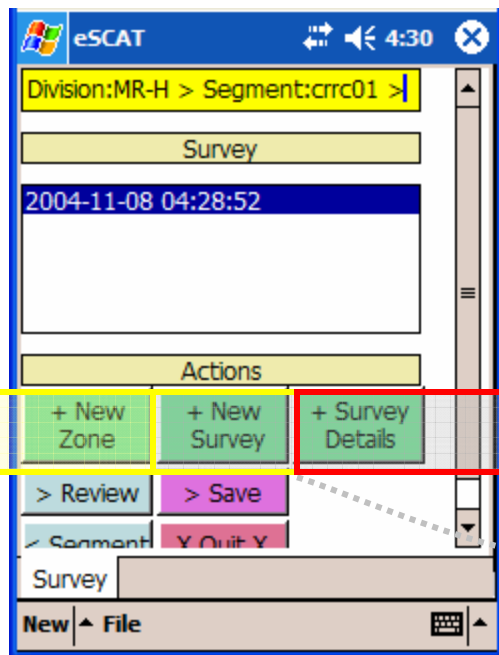
Add details to new segment (see previous)

Proceed to survey form

# eSCAT: Survey Form

- Region
- Division
- Segment
- Survey
- Point

## Survey



Add details to current survey

Add new survey

Add new zone to survey



# eSCAT: Add Survey Details

NOAA's National Ocean Service / Office of Response & Restoration

Region

Division

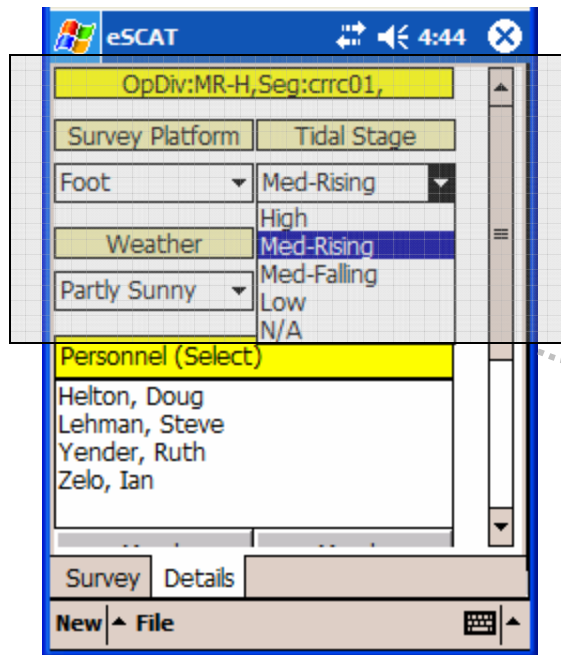
Segment

Survey

Point

Current conditions

Create Team



OpDiv:MR-H,Seg:crc01,

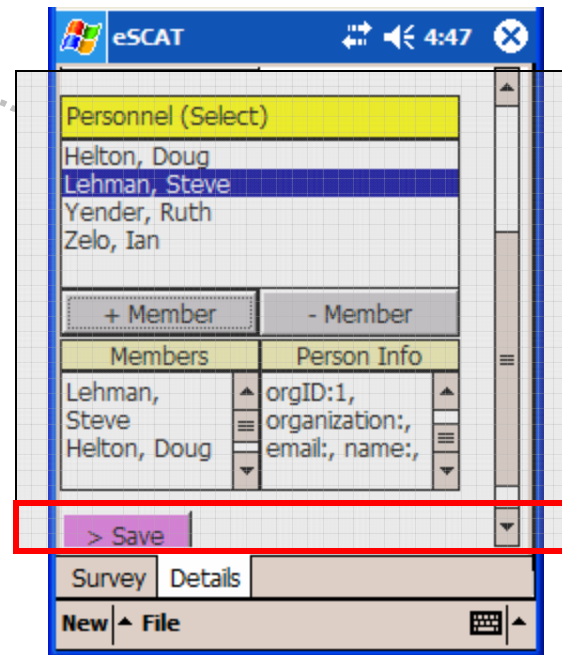
Survey Platform	Tidal Stage
Foot	Med-Rising
	High
Weather	Med-Rising
Partly Sunny	Med-Falling
	Low
	N/A

Personnel (Select)

- Helton, Doug
- Lehman, Steve
- Yender, Ruth
- Zelo, Ian

Survey Details

New File



Personnel (Select)

- Helton, Doug
- Lehman, Steve
- Yender, Ruth
- Zelo, Ian

+ Member - Member

Members	Person Info
Lehman, Steve	orgID:1,
	organization:;
Helton, Doug	email; name:;

> Save

Survey Details

New File

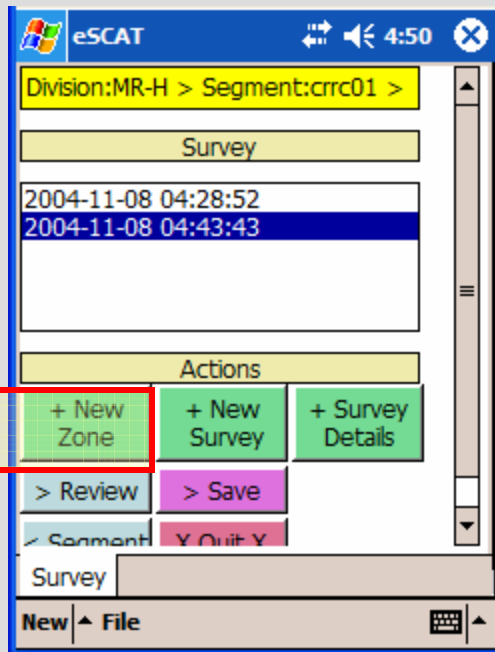
Scrolling down the form

# eSCAT: Add Zone to Survey

NOAA's National Ocean Service / Office of Response & Restoration

- Region
- Division
- Segment
- Survey
- Point

## Survey



Add new zone point to survey

# eSCAT: Observation Point Form

NOAA's National Ocean Service / Office of Response & Restoration

Region

Division

Segment

Survey

Point

Pocket\_PC  
File Zoom Tools Help  
eSCAT  
c01 > Survey: 04:43, Mon (11-08)  
Observation Type  
Surface Oil  
Set Position: Map GPS  
lat: 47.6878211113  
lon: -122.254574749  
+ Details - Cancel  
Obs  
New File

Select zone type

Add zone location using map panel or GPS

Add zone Details

# eSCAT: Surface Oiling Zone Form

NOAA's National Ocean Service / Office of Response & Restoration



## Relative position, extent

Survey: 04:43, Mon (11-08)

Intertidal Location  
Middle Intertidal

Spatial Extent  
Width [m]: 15 Length [m]: 8

ESI type  
Coarse-grained sand beaches

Obs	Zone
1	
2	
3	
4	
5	
6	
7	
8	
9	
0	
-	
=	
←	
Tab	
q	
w	
e	
r	
t	
y	
u	
i	
o	
p	
[	
]	
CAP	
a	
s	
d	
f	
g	
h	
j	
k	
l	
;	
'	
Shift	
z	
x	
c	
v	
b	
n	
m	
,	
.	
/	
←	
→	
Ctrl	
á	
ü	
`	
\	
↓	
↑	
←	
→	

New File

## ESI type, oiling distribution

Width [m]: 15 Length [m]: 8

ESI type  
Coarse-grained sand beaches  
Exposed rocky shores  
Exposed scarps and steep slope  
Exposed tidal flats  
Exposed wave-cut platforms in  
Exposed solid man-made struct

Oiled Vegetation  
 All parts  
 Trunks  
 Leaves

Character Thickness

Obs	Zone

New File

## Oil characteristics

Leaves

Character Thickness

Distribution [%]

Penetration [cm]

Tarball Data

Avg No./Area

Area TB State

Obs	Zone

New File

Scrolling down the form

# eSCAT: Oiling Visual Help

NOAA's National Ocean Service / Office of Response & Restoration

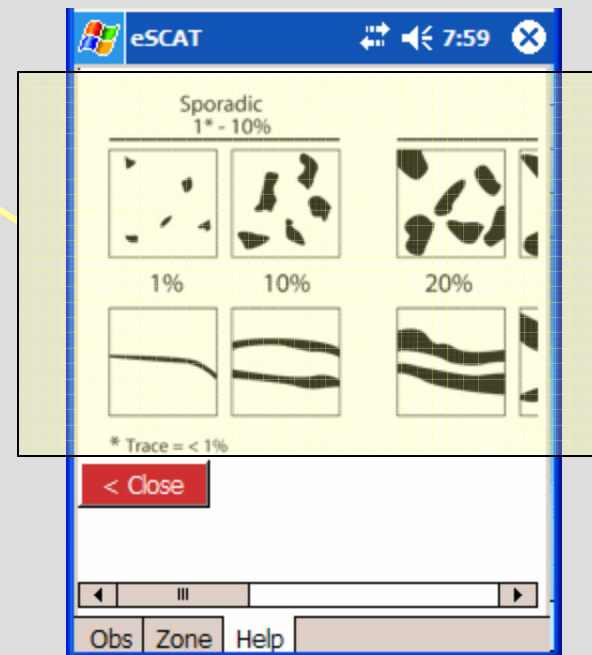
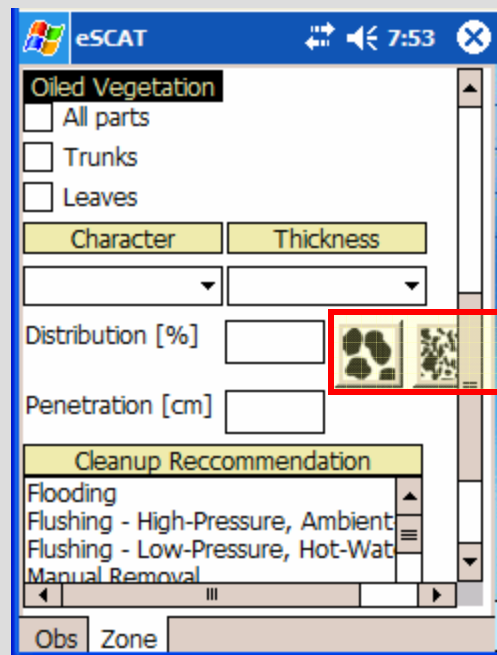
Region

Division

Segment

Survey

Point



# eSCAT: Surface Oiling Zone Form

NOAA's National Ocean Service / Office of Response & Restoration

Region

Division

Segment

Survey

Point

## Tarballs

eSCAT  
Penetration [cm] 1  
Tarball Data  
Avg No./Area  
Area TB State  
m2 Fresh  
Avg Size [cm] 2  
Max Size [cm] 4  
Cleanup Recommendations

## Cleanup Recommendations

eSCAT  
Max Size [cm] 4  
Cleanup Recommendations  
Available Use  
Debris Removal -Manual  
Flooding Removal  
Manual Remova -Sorbents  
Sorbents  
Steam Cleaning  
No Concern  
> Save - Cancel

Save Zone

Scrolling further down the form